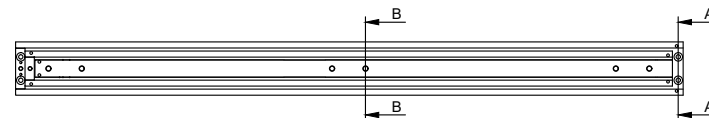
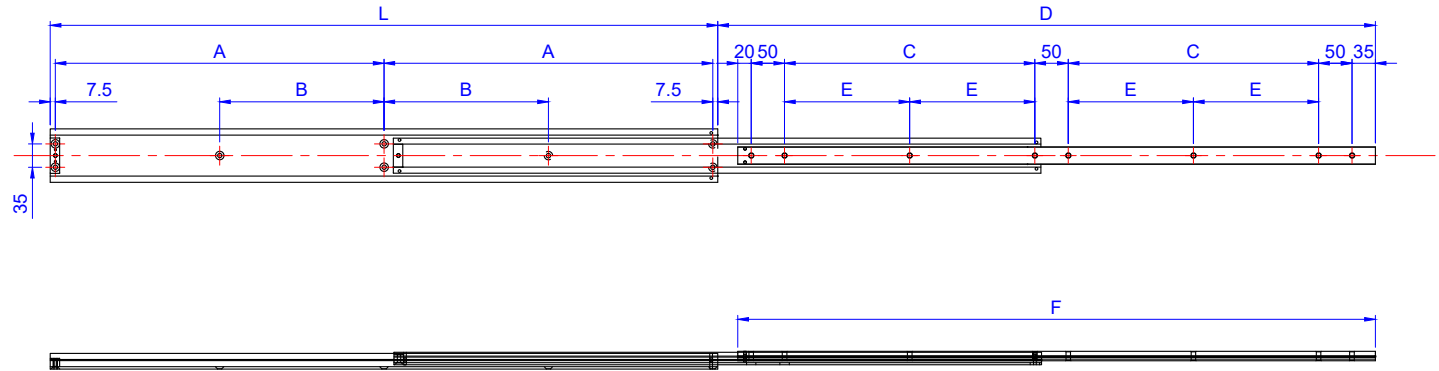
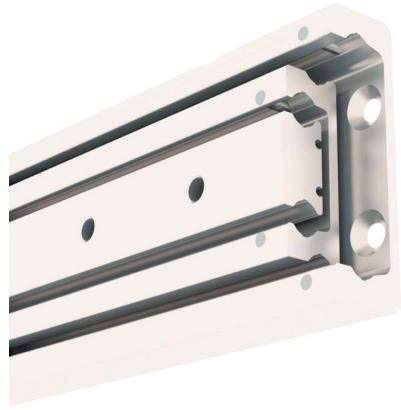


4008.LOCKER-SX

300kg Locker Slide: Non- Locking

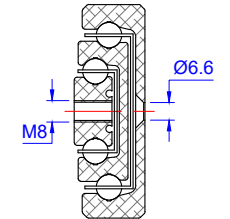
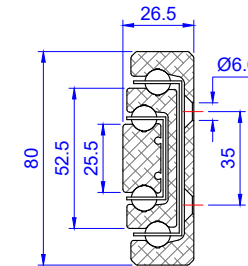


Datasheet: 2024:1



SECTION A-A
SCALE 1:1

SECTION B-B
SCALE 1:1



Part Number	L	D	A	B	C	E	F	Load kg/pr
4008.LOCKER-SX.0300	300	250	142.5	-	25	-	255	250kg
4008.LOCKER-SX.0350	350	325	167.5	-	50	-	305	260kg
4008.LOCKER-SX.0400	400	400	192.5	-	75	-	355	275kg
4008.LOCKER-SX.0450	450	450	217.5	-	100	-	405	290kg
4008.LOCKER-SX.0500	500	500	242.5	-	125	-	455	295kg
4008.LOCKER-SX.0550	550	550	267.5	-	150	-	505	300kg
4008.LOCKER-SX.0600	600	600	292.5	-	175	-	555	300kg
4008.LOCKER-SX.0650	650	650	317.5	-	200	-	605	295kg
4008.LOCKER-SX.0700	700	700	342.5	-	225	-	655	290kg
4008.LOCKER-SX.0750	750	750	367.5	-	250	-	705	280kg
4008.LOCKER-SX.0800	800	800	392.5	-	275	-	755	270kg
4008.LOCKER-SX.0850	850	850	417.5	-	300	-	805	260kg
4008.LOCKER-SX.0900	900	900	442.5	-	325	-	855	250kg
4008.LOCKER-SX.0950	950	950	467.5	-	350	-	905	240kg
4008.LOCKER-SX.1000	1000	1000	492.5	-	375	-	955	230kg
4008.LOCKER-SX.1100	1100	1100	542.5	271.25	425	212.5	1055	200kg
4008.LOCKER-SX.1200	1200	1200	592.5	296.25	475	237.5	1155	180kg
4008.LOCKER-SX.1300	1300	1300	642.5	321.25	525	262.5	1255	160kg
4008.LOCKER-SX.1400	1400	1400	692.5	346.25	575	287.5	1355	135kg
4008.LOCKER-SX.1500	1500	1500	742.5	371.25	625	312.5	1455	105kg
4008.LOCKER-SX.1600	1600	1600	792.5	396.25	675	337.5	1555	75kg
4008.LOCKER-SX.1700	1700	1700	842.5	421.25	725	362.5	1655	50kg

FILE NAME	FSCM NO	SIZE	SHEET	SCALE
		A1	1	1:4
DRAWN	2023.12.16 JD	GEN.TOL.DIM	ISO 2768-1 M	
APPROVAL		GEN.TOL.ANGLE		
CHECK	2023.12.21 EH	CONTRACT NO	ITEM NO 4008.LOCKER-SX	
SLIDING SYSTEMS			Global Patent Pending	

Sold as a non-handed pair

Beam material: 7005-T53. Tensile strength: 390 MPa

Ball bearings: Stainless steel AISI-304 (1.4301) Dia 9.5mm

Ball cages: Stainless Steel AISI-304 (1.4301)

End bolts & stopping pins: Stainless steel A2 304 (1.4301)

Surface protection: Anodised to BS 1615 AA10

Operational temperature range: -10 to +50°C

Lubrication: 303 multi-purpose grease. Temp range: -6 -to +260°C

Thread pitches: M8 coarse on inner beam

Stated Load Capacities: Fully extended, uniformly mounted pair of slides.

Corrosion Resistant, Full Extension Telescopic Slide

- Tested to 10,000 cycles on a 1,000mm drawer width at 75% load capacity
- We do not recommend mounting flat. If so, reduce the load by 80%
- For vehicular or dynamic use, both slides need to be locking to achieve full load
- If truck mounting a locking & non-locking slide as a pair, reduce load by 50%
- Designed for fire truck and emergency vehicle lockers
- Half the weight of steel alternatives without loss of load capacity
- A single slide at 1,000mm weighs 4.3kg
- Customer bespoke lengths & drilling format subject to MOQ.
- Standard lengths 300mm - 1,700mm: Ideal for solar panel stowage & extraction
- Locking Option: 4008.Locker-SLX
- **Do Not Dismantle The Slide! This will invalidate the warranty**

