

OWS-60 weighs 7.62kg/m. Sold as singles				Drilling Pattern		
Part Number	Closed Length: L	Extension Length: D	Load per Pair: kg	"A"	"B"	"C"
4015.OWS060.0150	150	75	400	50	-	-
4015.OWS060.0200	200	100	440	50	-	-
4015.OWS060.0250	250	125	480	50	-	50
4015.OWS060.0300	300	150	520	50	-	100
4015.OWS060.0350	350	175	560	50	-	150
4015.OWS060.0400	400	200	610	50	-	200
4015.OWS060.0450	450	225	660	50	-	250
4015.OWS060.0500	500	250	710	50		300
4015.OWS060.0550	550	275	720	50	150	-
4015.OWS060.0600	600	300	730	50	175	-
4015.OWS060.0650	650	325	740	50	200	-
4015.OWS060.0700	700	350	750	50	225	-
4015.OWS060.0750	750	375	740	50	250	-
4015.OWS060.0800	800	400	720	50	275	-
4015.OWS060.0850	850	425	700	50	300	-
4015.OWS060.0900	900	450	680	50	325	-
4015.OWS060.0950	950	475	660	50	350	-
4015.OWS060.1000	1000	500	640	50	375	-
4015.OWS060.1050	1050	525	610	50	400	-
4015.OWS060.1100	1100	550	580	50	425	-
4015.OWS060.1150	1150	575	550	50	450	-
4015.OWS060.1200	1200	600	520	50	475	-

Options:

- 'F' - One mounting beam countersunk
- 'FF' - Both beams countersunk
- 'SB' - Stainless steel 316L ball bearings
- 'SC' - Stainless steel ball cages
- 'SA' - Stainless end bolts & retaining pins
- 'V' - V shaped raceways (bi-directional slides)
- '70' - 70% over-extension of standard slide

Bespoke length, drilling pattern & extension on request

Do not dismantle the slide!



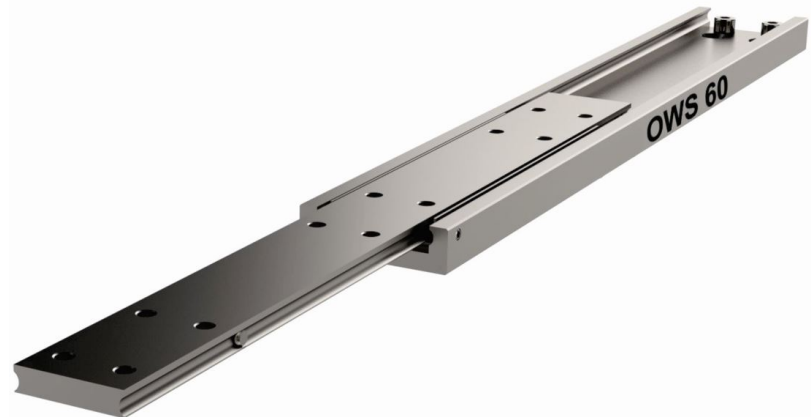
The maximum safe working load is stated for a fully extended pair of slides, mounted upright. Use all fixing holes and spread the load evenly across the inner beam.

Flat mounting: Reduce the load by 60-80%.

We recommend the use of strong L brackets for under or floor mount.

Deflection is calculated at approx 1% of the closed length, at or near full load capacity.

OWS-60 weighs 7.62kg/m. Sold as singles				Drilling Pattern		
Part Number	Closed Length: L	Extension Length: D	Load per Pair: kg	"A"	"B"	"C"
4015.OWS060.1250	1250	625	490	50	-	-
4015.OWS060.1300	1300	650	480	50	-	-
4015.OWS060.1350	1350	675	460	50	-	50
4015.OWS060.1400	1400	700	440	50	-	100
4015.OWS060.1550	1450	725	420	50	-	150
4015.OWS060.1500	1500	750	390	50	-	200
4015.OWS060.1550	1550	775	360	50	-	250
4015.OWS060.1600	1600	800	340	50	-	300
4015.OWS060.1650	1650	825	315	50	150	-
4015.OWS060.1700	1700	850	290	50	175	-
4015.OWS060.1750	1750	875	275	50	200	-
4015.OWS060.1800	1800	900	250	50	225	-
4015.OWS060.1850	1850	925	220	50	250	-
4015.OWS060.1900	1900	950	190	50	275	-
4015.OWS060.1950	1950	975	160	50	300	-
4015.OWS060.2000	2000	1000	130	50	325	-



If mounting on the indirect axis, flat, as in the image above, reduce the load capacity by 60-80% and allow for increased deflection, or contact our engineers to request accurate FEA load analysis for OEM projects. We load rate per fully extended pair of slides on the direct axis, upright, with uniform loading across the beams. If load capacities need to be increased, please contact us for technical advice.

Material: All steel parts/no plastics

Beams: Cold drawn carbon steel C45E+C. EN 10277 milled raceways

Ball bearings: Chromed steel C85, G100. Din 5401

Ball cages: Zinc plated sheet steel. Laser cut profiles

End bolts: Steel ASTM A307

Surface Protection: Electrolytic alkaline zinc coating (10-12 microns). conforming to DIN EN ISO 9227 neutral salt spray testing. No white rust appearance within 120 hours. No red rust within 1,032 hours

Temperature range: Steel slides -20°C to +250°C provided the necessary lubricants are applied and the beams are mounted freely to allow expansion

Lubrication: We apply and recommend lithium based EP3 grease for general applications. High & low temp grease upon request

Thread pitches: As per end profile image - coarse

