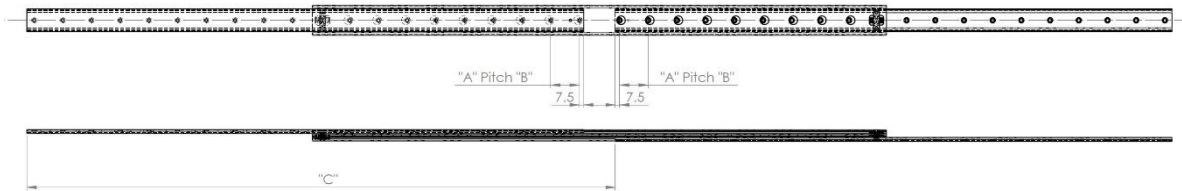
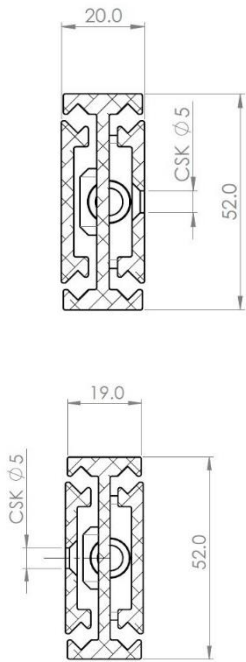


5220 Aero



PROFESSIONAL RANGE



Configuration Table					
Part Number	Installation Length "L"	Extension Length "C"	Load Per Pair (kg)	Drill Table	
				"A"	"B"
4013.5220.0300	300	330	140	50	5
4013.5220.0350	350	380	145	50	6
4013.5220.0400	400	430	150	50	7
4013.5220.0450	450	480	155	50	8
4013.5220.0500	500	530	164	50	9
4013.5220.0550	550	580	168	50	10
4013.5220.0600	600	630	170	50	11
4013.5220.0650	650	680	160	50	12
4013.5220.0700	700	730	150	50	13
4013.5220.0750	750	780	140	50	14
4013.5220.0800	800	830	135	50	15
4013.5220.0850	850	880	132	50	16
4013.5220.0900	900	930	129	50	17
4013.5220.0950	950	980	127	50	18
4013.5220.1000	1000	1030	125	50	19

Mounting details
Refer to drill table hole pitches



We recommend use the major axis, do not dismantle the slide! The maximum safe load is given for a fully extended pair of slides, mounted on the major axis, with a load spread uniformly along the inner beam.

- Beams: Aircraft grade aluminium 7075 T6. Clear anodised
- Rollers: Stainless inox 316L for hi-load 340kg capacity
- Caged cross-roller bearings for smooth, deflection free, extension
- Unique design: Hi-impact shock springs & raceway cleaning wipers
- Standard lengths & extensions from 300 – 1000mm
- Special lengths, drillings & surface finish (MIL grade) upon request
- Silent, lightweight & corrosion resistant: 30% the weight of steel

'UK Company, Global Reach'