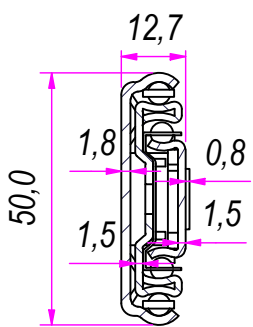
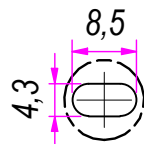


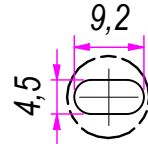
SEZ. A-A



B (1:1)



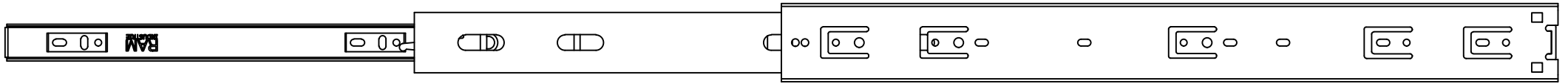
C (1:1)



SLIDING
SYSTEMS

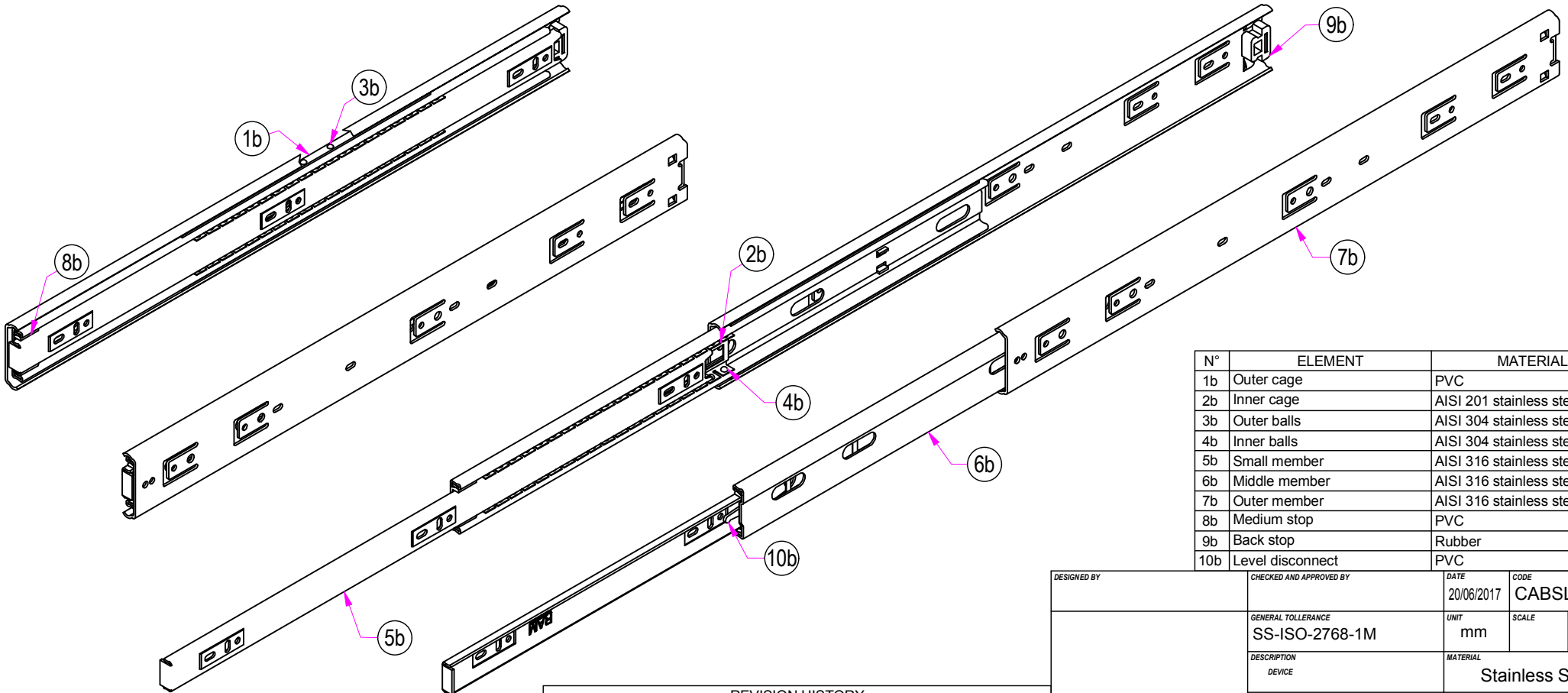
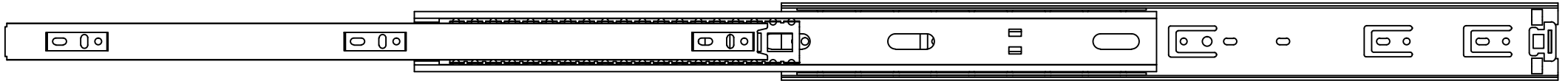
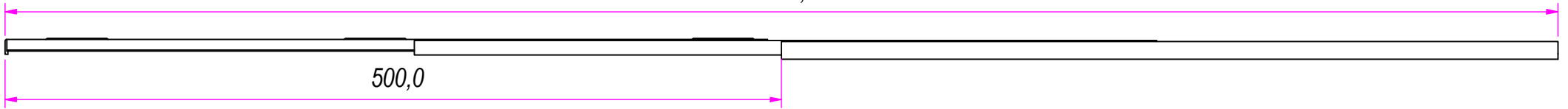
		REVISION HISTORY		
		REV	DESCRIPTION	DATE
Guide per cassetti; guide telescopiche	Coulisses à billes; coulisse télescopique	1a	Raising the holes	30/08/2017
Drawer slide; telescopic ball bearing slide	Guías para cajones; guía teleópica	2a	Added hole (19-09)	25/11/2019
Kugelführung; Teleskopschienen				

DESIGNED BY	CHECKED AND APPROVED BY	DATE	CODE	
		20/06/2017	CABLX 500	
GENERAL TOLLERANCE		UNIT	SCALE	SHEET
SS-ISO-2768-1M		mm		1 of 2
DESCRIPTION		MATERIAL		
		Stainless Steel		
		PAIR WEIGHT		
		2,028 Kg	02C	



1000,0

500,0



N°	ELEMENT	MATERIAL
1b	Outer cage	PVC
2b	Inner cage	AISI 201 stainless steel
3b	Outer balls	AISI 304 stainless steel
4b	Inner balls	AISI 304 stainless steel
5b	Small member	AISI 316 stainless steel
6b	Middle member	AISI 316 stainless steel
7b	Outer member	AISI 316 stainless steel
8b	Medium stop	PVC
9b	Back stop	Rubber
10b	Level disconnect	PVC

DESIGNED BY	CHECKED AND APPROVED BY	DATE	CODE
		20/06/2017	CABSLX 500
GENERAL TOLLERANCE		UNIT	SCALE
SS-ISO-2768-1M		mm	
DESCRIPTION		MATERIAL	
DEVICE		Stainless Steel	
		PAIR WEIGHT	SHEET
		2,028 Kg	2 of 2

REVISION HISTORY			
REV	DESCRIPTION	DATE	
1a	Raising the holes	30/08/2017	
2a	Added hole (19-09)	25/11/2019	

Guide per cassetti; guide telescopiche	Coulisses à billes; coulisse télescopique
Drawer slide; telescopic ball bearing slide	Guías para cajones; guía teleópica
Kugelführung; Teleskopschienen	