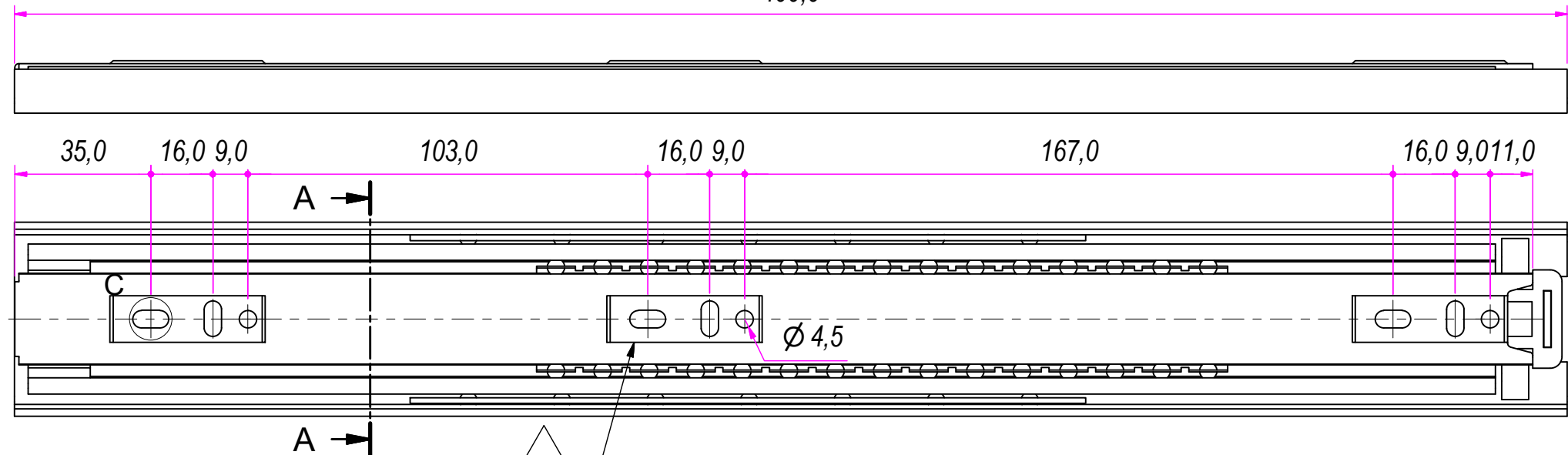
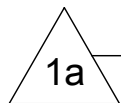
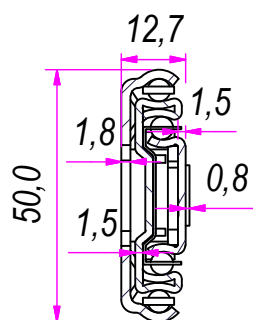


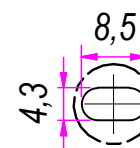
400,0



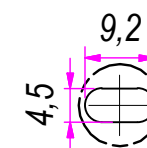
SEZ. A-A



B (1:1)



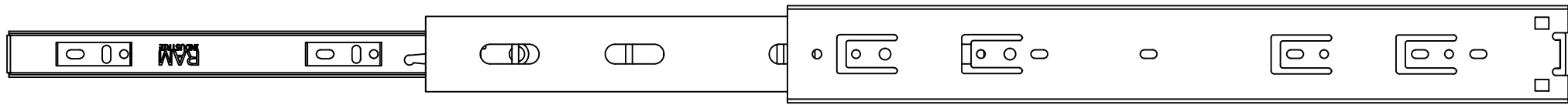
C (1:1)



SLIDING
SYSTEMS

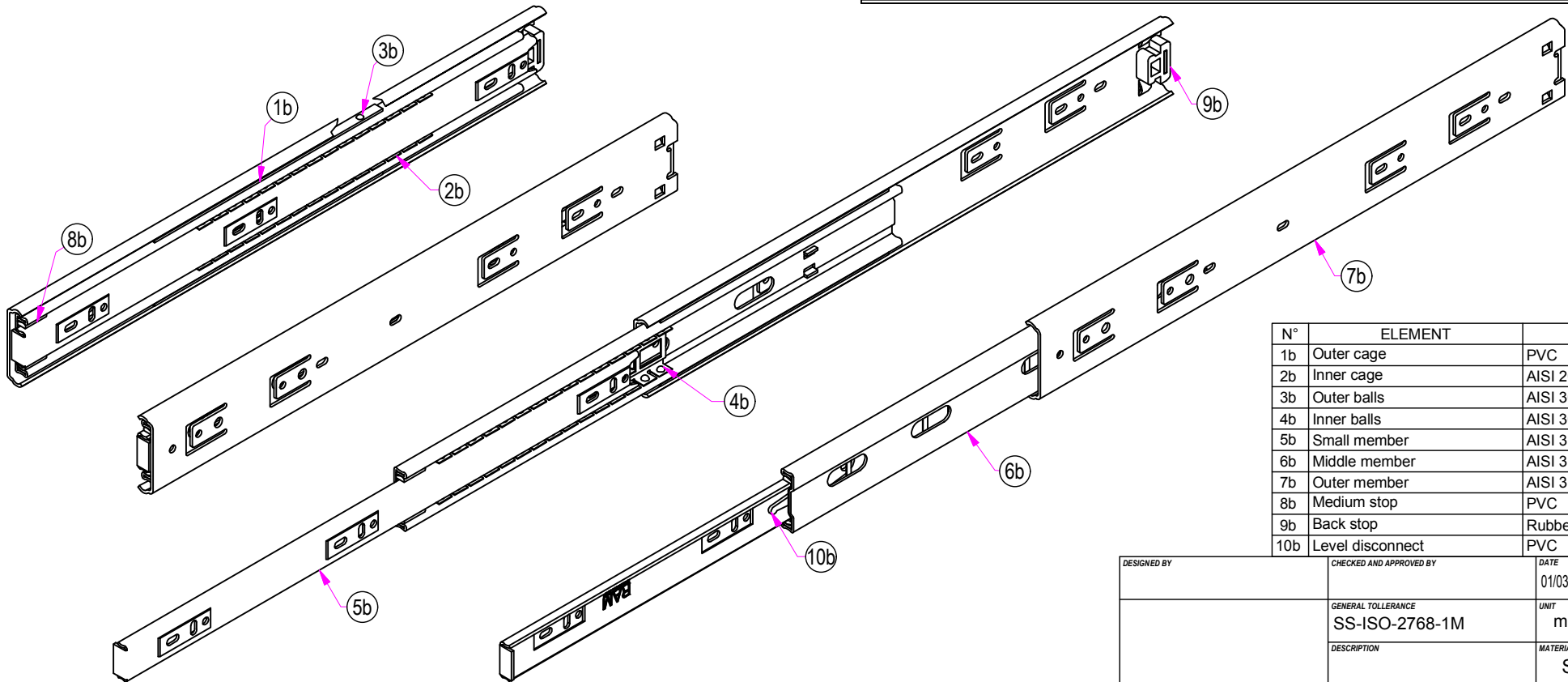
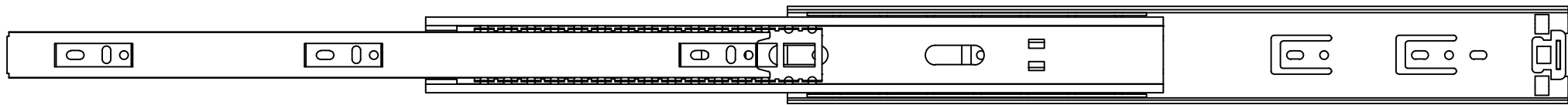
DESIGNED BY	CHECKED AND APPROVED BY	DATE	CODE	
		01/03/2017	CABSLX 400	
GENERAL TOLERANCE		UNIT	SCALE	SHEET
SS-ISO-2768-1M		mm		1 of 2
DESCRIPTION		MATERIAL		
		Stainless Steel		
DEVICE		PAIR WEIGHT		
		1,608 Kg	02C	

Guide per cassetti; guide telescopiche	Coulisses à billes; coulisse télescopique	REVISION HISTORY		
Drawer slide; telescopic ball bearing slide	Guías para cajones; guía teleópica	REV	DESCRIPTION	DATE
Kugelführung; Teleskopschienen		1a	Raising the holes	30/08/2017



800,0

400,0



N°	ELEMENT	MATERIAL
1b	Outer cage	PVC
2b	Inner cage	AISI 201 stainless steel
3b	Outer balls	AISI 304 stainless steel
4b	Inner balls	AISI 304 stainless steel
5b	Small member	AISI 316 stainless steel
6b	Middle member	AISI 316 stainless steel
7b	Outer member	AISI 316 stainless steel
8b	Medium stop	PVC
9b	Back stop	Rubber
10b	Level disconnect	PVC

DESIGNED BY	CHECKED AND APPROVED BY	DATE	CODE
		01/03/2017	CABSLX 400
GENERAL TOLLERANCE		UNIT	SCALE
SS-ISO-2768-1M		mm	2 of 2
DESCRIPTION		MATERIAL	
		Stainless Steel	
DEVICE	PAIR WEIGHT		
	1,608 Kg	02C	

REVISION HISTORY		REV	DESCRIPTION	DATE
Guide per cassetti; guide telescopiche	Coulisses à billes; coulisse télescopique	1a	Raising the holes	30/08/2017
Drawer slide; telescopic ball bearing slide	Guías para cajones; guía teleópica			
Kugelführung; Teleskopschienen				