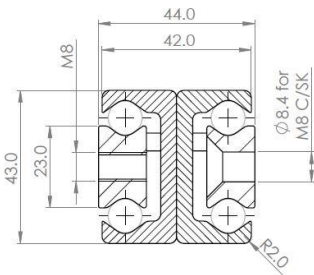
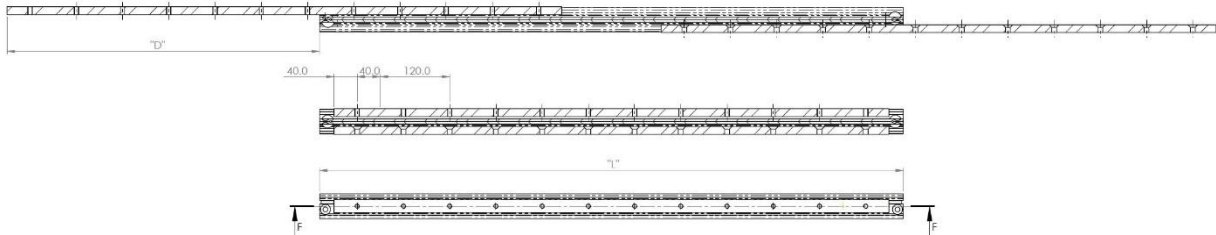


TDB43LK
SEQUENTIAL EXT'N FRONT & REAR

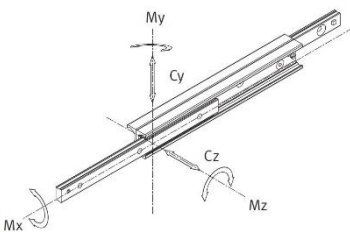


Mounting details

Configuration & Load Table					
Part Number	Installation Length "L"	Extension Length 2x "D"	Load Capacity		C100 (N)
			Cy (N)	Cz (N)	
4080.TDB43LK.0530	530	541	1657	1160	
4080.TDB43LK.0610	610	641	1849	1243	
4080.TDB43LK.0690	690	711	2363	1141	

Load capacity are stated per single extended slide Axial (Y) & Coaxial (Z) in Newtons

Options: Various dimensions of the main profile, slide lengths, extensions, drillings and hole centres to customer requirements



We recommend use the major axis, do not dismantle the slide! The maximum safe load is given for a fully extended pair of slides, mounted on the major axis, with a load spread uniformly along the inner beam.

Material: Beams: Cold drawn steel CF53
 Induction hardened raceways 58+4 HRC
 Depth of hardening: Min 0.8mm
 Black zinc passivate corrosion protection
 Four point bearing contact bearings with zero clearance
 Bearings: GCr15 60+4 HRC, Cage material: SPCC
 Rotating disc holds & release beams for sequential travel
 Max operational temp: 170 degs C (+hi-temp lube)
 Max operating speed: 0.8 m/s
 We recommend external stops are used during operation

'UK Company, Global Reach'