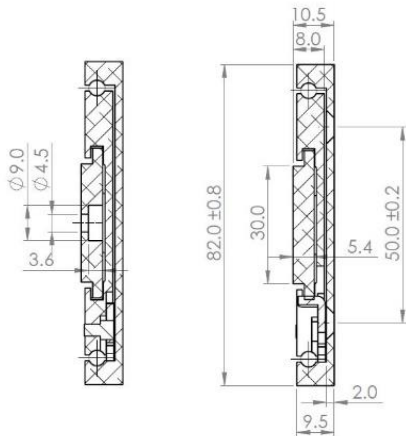
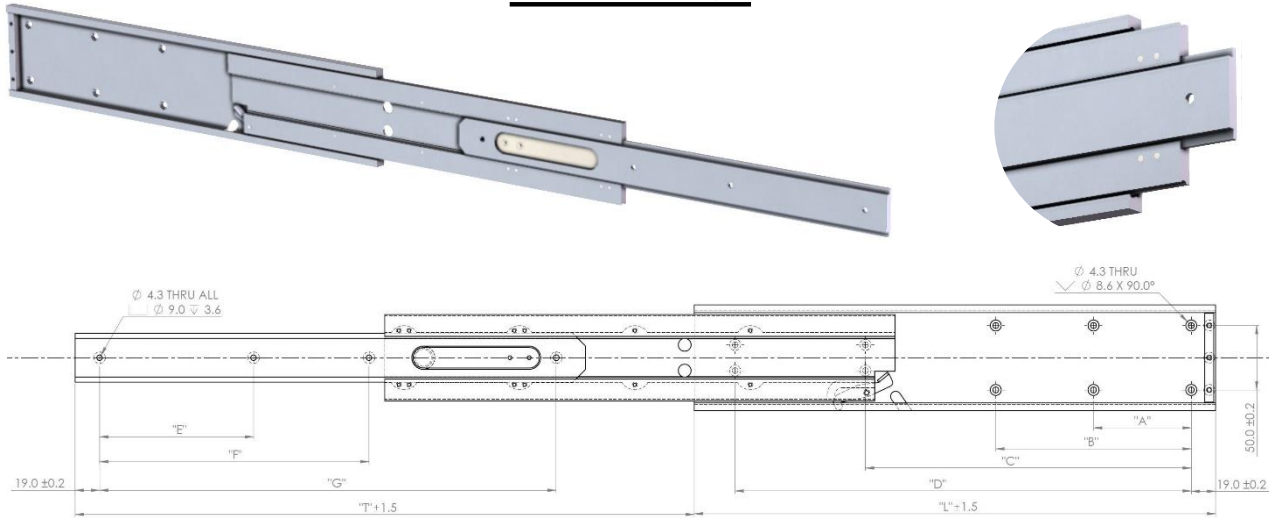


4014.140QD



Mounting details
Refer to drill table hole pitches

Configuration Table												
Part Number	Installation Length "L"	Extension Length "T"	Drill Table							Weight (KG/Each)	QTY/ BOX	Load (KG/Pair)
			"A"	"B"	"C"	"D"	"E"	"F"	"G"			
4014.140QD.012	304.8	381	101	-	-	254	85	155	270.5	0.6	12	57
4014.140QD.014	355.6	431.8	127	-	-	305	90	180	305	0.7	12	60
4014.140QD.016	406.4	482.6	76	152	254	356	120	210	356	0.8	12	66
4014.140QD.018	457.2	533.4	76	152	279	406	127	230	406	0.9	12	70
4014.140QD.020	508	584.2	101	203	330	457	140	250	457	1	12	69
4014.140QD.022	558.8	636	101	203	355	508	203.2	412.8	508	1.1	12	68
4014.140QD.024	609.6	685.8	127	254	406	559	203	430	560	1.2	12	65

Options: Various dimensions of the main profile, slide lengths, extensions, drillings and hole centres to customer requirements



We recommend use the major axis, do not dismantle the slide! The maximum safe load is given for a fully extended pair of slides, mounted on the major axis, with a load spread uniformly along the inner beam.

Material:

- Beams: Automotive grade aluminium 7N01 T5. Clear anodised
- Ball bearings: Hardened steel & chromed.
- Cages: Plated steel Caged ball bearings for smooth extension
- Standard surface finish meets MIL-A-8625 Type II
- Silent & light weight: 30% the weight of steel slides

'UK Company, Global Reach'