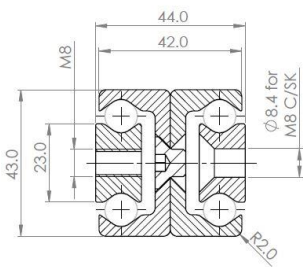
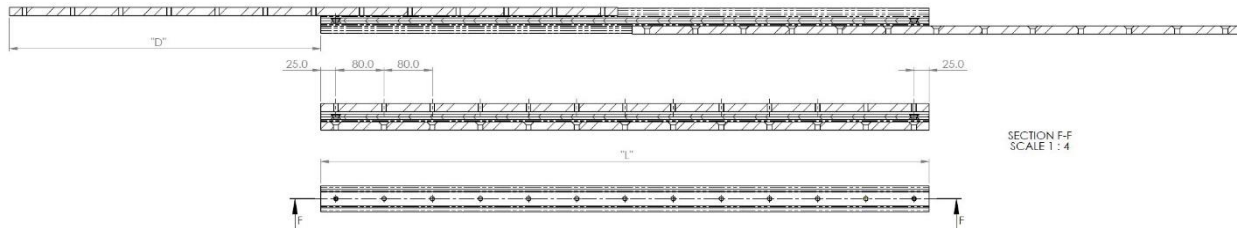
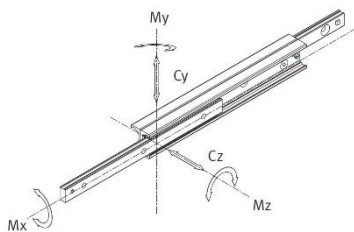


TDB43 FULL EXTENSION



Mounting details

Part Number	Installation Length "L"	Extension Length 2x "D"	Load Capacity		C100 (N)
			Cy (N)	Cz (N)	
4080.TDB43.0210	210	246	606	425	923
4080.TDB43.0290	290	316	1115	781	1687
4080.TDB43.0370	370	416	1302	912	1974
4080.TDB43.0450	450	486	1827	1280	2764
4080.TDB43.0530	530	556	2376	1435	3580
4080.TDB43.0610	610	626	2935	1303	4414
4080.TDB43.0690	690	726	3092	1096	4661
4080.TDB43.0770	770	796	3056	1018	5493
4080.TDB43.0850	850	866	2848	945	6335
4080.TDB43.0930	930	966	2508	835	6572
4080.TDB43.1010	1010	1036	2365	788	7411
4080.TDB43.1090	1090	1106	2239	745	8257
4080.TDB43.1170	1170	1206	2020	673	8489



Load capacity are stated per single extended slide Axial (Y) & Coaxial (Z) in Newtons

Options: Various dimensions of the main profile, slide lengths, extensions, drillings and hole centres to customer requirements

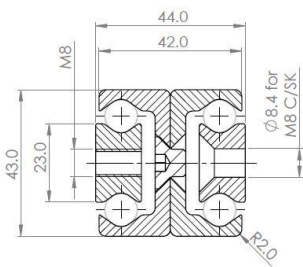
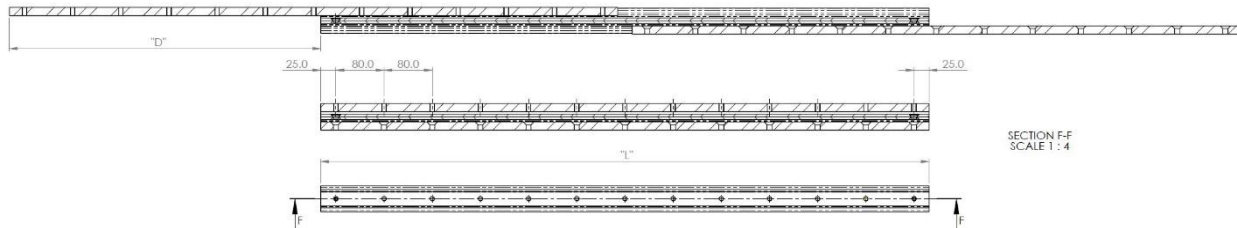


We recommend use the major axis, do not dismantle the slide! The maximum safe load is given for a fully extended pair of slides, mounted on the major axis, with a load spread uniformly along the inner beam.

- Material:** Beams: Cold drawn steel CF53
- Induction hardened raceways 58+4 HRC
- Depth of hardening: Min 0.8mm
- Black zinc passivate corrosion protection
- Four point bearing contact bearings with zero clearance
- Bearings: GCr15 60+4 HRC, Cage material: SPCC
- Two way travel by removal of stop screw
- Max operational temp: 170 degs C (+hi-temp lube)
- Max operating speed: 0.8 m/s
- We recommend external stops are used during operation

'UK Company, Global Reach'

TDB43 FULL EXTENSION

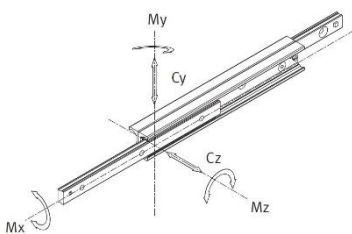


Mounting details

Configuration & Load Table					
Part Number	Installation Length "L"	Extension Length 2x "D"	Load Capacity		C100 (N)
			Cy (N)	Cz (N)	
4080.TDB43.1250	1250	1276	1929	642	9332
4080.TDB43.1330	1330	1376	1767	588	9568
4080.TDB43.1410	1410	1446	1965	565	10409
4080.TDB43.1490	1490	1516	1628	542	11255
4080.TDB43.1570	1570	1586	1568	523	12105
4080.TDB43.1650	1650	1686	1460	487	12330
4080.TDB43.1730	1730	1756	1407	470	13178
4080.TDB43.1810	1810	1856	1322	440	13406
4080.TDB43.1890	1890	1926	1281	426	14252
4080.TDB43.1970	1970	2026	1207	402	14483

Load capacity are stated per single extended slide Axial (Y) & Coaxial (Z) in Newtons

Options: Various dimensions of the main profile, slide lengths, extensions, drillings and hole centres to customer requirements



We recommend use the major axis, do not dismantle the slide! The maximum safe load is given for a fully extended pair of slides, mounted on the major axis, with a load spread uniformly along the inner beam.

Material: Beams: Cold drawn steel CF53
 Induction hardened raceways 58+4 HRC
 Depth of hardening: Min 0.8mm
 Black zinc passivate corrosion protection
 Four point bearing contact bearings with zero clearance
 Bearings: GCr15 60+4 HRC, Cage material: SPCC
 Two way travel by removal of stop screw
 Max operational temp: 170 degs C (+hi-temp lube)
 Max operating speed: 0.8 m/s
 We recommend external stops are used during operation

'UK Company, Global Reach'