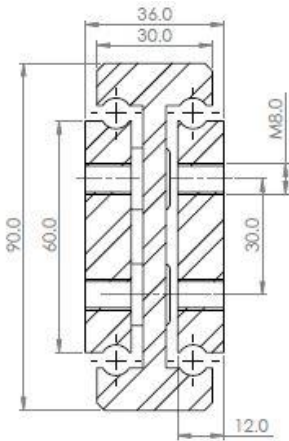
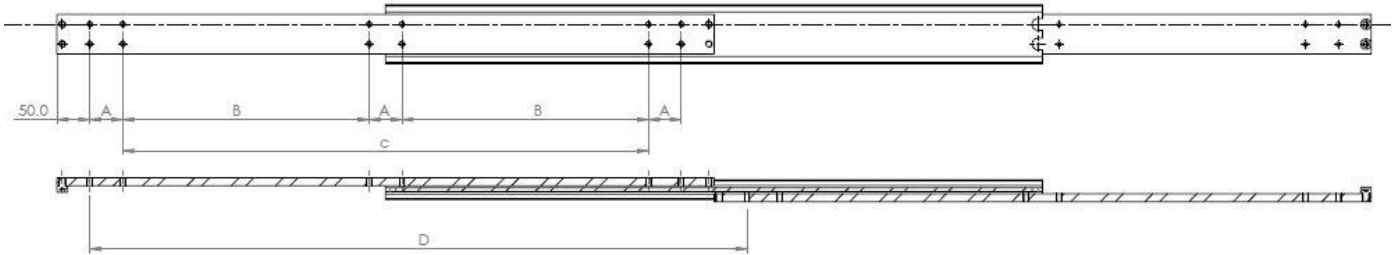
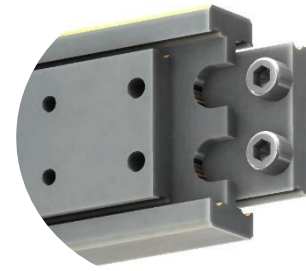


SDTS090



Mounting details
Refer to drill table hole pitches

Configuration Table					
Part Number	Installation Length "L"	Extension Length "D"	Load Per Pair (kg)	Drill Table	
				"A"	"B"
4015.SDTS090.0300	300	300	1125	50	100
4015.SDTS090.0350	350	350	1125	50	150
4015.SDTS090.0400	400	400	1125	50	200
4015.SDTS090.0450	450	450	1100	50	250
4015.SDTS090.0500	500	500	1080	50	300
4015.SDTS090.0550	550	550	1060	50	350
4015.SDTS090.0600	600	600	1050	50	400
4015.SDTS090.0650	650	650	1040	50	200
4015.SDTS090.0700	700	700	1025	50	225
4015.SDTS090.0750	750	750	1000	50	250
4015.SDTS090.0800	800	800	975	50	275
4015.SDTS090.0850	850	850	950	50	300
4015.SDTS090.0900	900	900	925	50	325
4015.SDTS090.0950	950	950	910	50	350
4015.SDTS090.1000	1000	1000	900	50	375
4015.SDTS090.1050	1050	1050	898	50	400
4015.SDTS090.1100	1100	1100	897	50	425
4015.SDTS090.1150	1150	1150	892	50	450
4015.SDTS090.1200	1200	1200	885	50	475
4015.SDTS090.1250	1250	1250	870	50	500
4015.SDTS090.1300	1300	1300	856	50	525

Options: Various dimensions of the main profile, slide lengths, extensions, drillings and hole centres to customer requirements

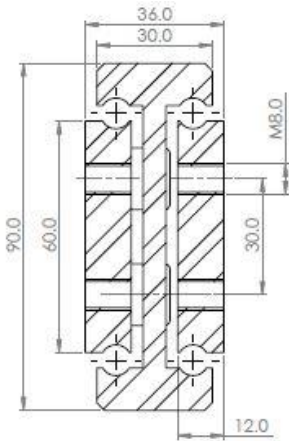
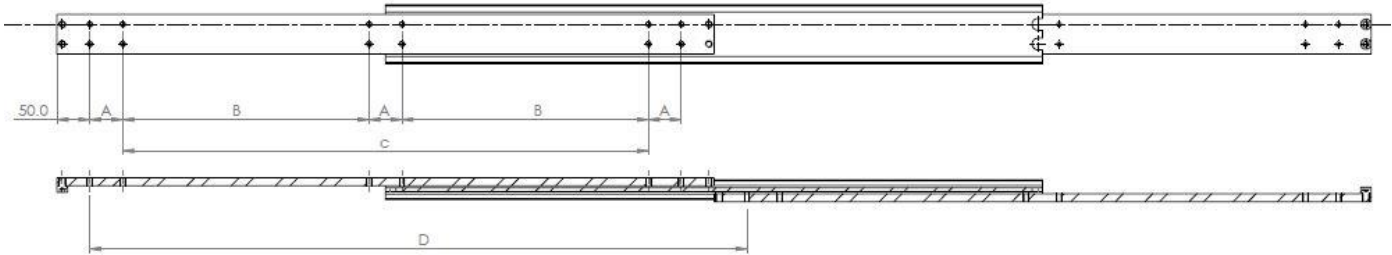


We recommend use the major axis, do not dismantle the slide! The maximum safe load is given for a fully extended pair of slides, mounted on the major axis, with a load spread uniformly along the inner beam.

- DPV** All stainless steel parts
- Beams: Stainless 316L (1.4404) cold drawn & precision milled
- Ball bearings: Stainless 316L (1.4404)
- Ball cages: Stainless 430 Ferritic (1.4016)
- End bolts: Stainless A2 304 (1.4301)
- Surface treatment: Polished
- Temperature range: Cryogenic to 800° C with suitable lubrication & material yield strength reduction

PROFESSIONAL RANGE Stainless Steel

SDTS090



Mounting details
Refer to drill table hole pitches

Configuration Table						
Part Number	Installation Length "L"	Extension Length "D"	Load Per Pair (kg)	Drill Table		
				"A"	"B"	"C"
4015.SDTS090.1350	1350	1350	830	50	550	
4015.SDTS090.1400	1400	1400	811	50	575	
4015.SDTS090.1450	1450	1450	775	50	600	
4015.SDTS090.1500	1500	1500	759	50	625	
4015.SDTS090.1550	1550	1550	725	50	650	
4015.SDTS090.1600	1600	1600	690	50	675	
4015.SDTS090.1650	1650	1650	650	50	700	
4015.SDTS090.1700	1700	1700	609	100	650	
4015.SDTS090.1750	1750	1750	564	100	675	
4015.SDTS090.1800	1800	1800	523	100	700	
4015.SDTS090.1850	1850	1850	478	100	725	
4015.SDTS090.1900	1900	1900	437	100	750	
4015.SDTS090.1950	1950	1950	390	100	875	
4015.SDTS090.2000	2000	2000	345	100	800	

Options: Various dimensions of the main profile, slide lengths, extensions, drillings and hole centres to customer requirements



We recommend use the major axis, do not dismantle the slide! The maximum safe load is given for a fully extended pair of slides, mounted on the major axis, with a load spread uniformly along the inner beam.

- Material:** All stainless steel parts
- Beams:** Stainless 316L (1.4404) cold drawn & precision milled
- Ball bearings:** Stainless 316L (1.4404)
- Ball cages:** Stainless 430 Ferritic (1.4016)
- End bolts:** Stainless A2 304 (1.4301)
- Surface treatment:** Polished
- Temperature range:** Cryogenic to ≈800° C with suitable lubrication & material yield strength reduction

PROFESSIONAL RANGE Stainless Steel