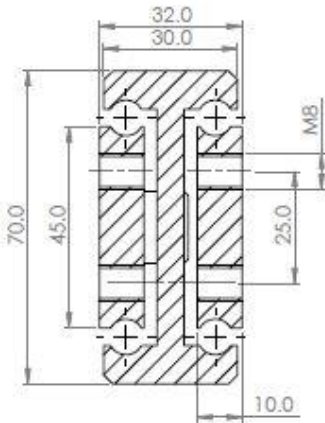
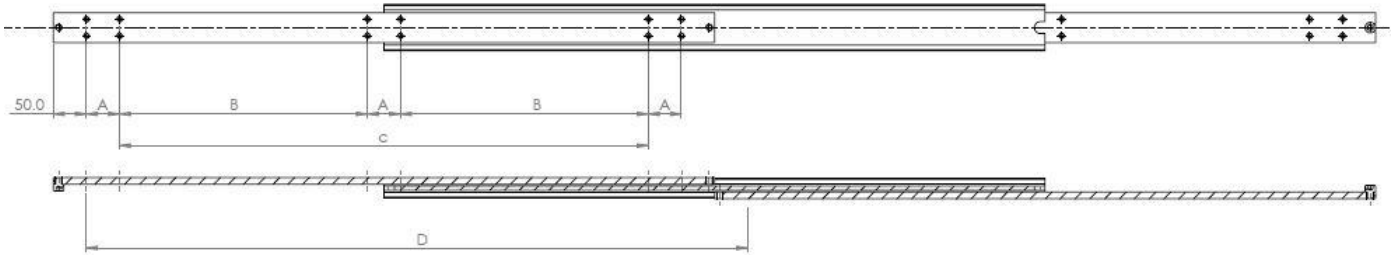
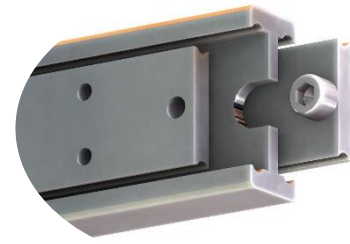
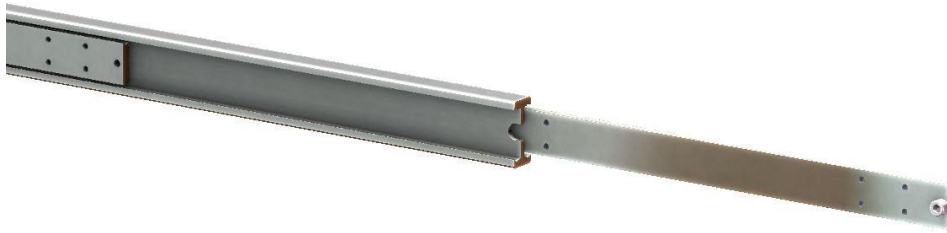


SDTS070



Mounting details
Refer to drill table hole pitches

Part Number	Installation Length "L"	Extension Length "D"	Load Per Pair (kg)	Drill Table		
				"A"	"B"	"C"
4015.SDTS070.1350	1350	1350	428	50	550	
4015.SDTS070.1400	1400	1400	403	50	575	
4015.SDTS070.1450	1450	1450	378	50	600	
4015.SDTS070.1500	1500	1500	353	50	625	
4015.SDTS070.1550	1550	1550	329	50	650	
4015.SDTS070.1600	1600	1600	305	50	675	
4015.SDTS070.1650	1650	1650	282	50	700	
4015.SDTS070.1700	1700	1700	259	100	650	
4015.SDTS070.1750	1750	1750	236	100	675	
4015.SDTS070.1800	1800	1800	213	100	700	
4015.SDTS070.1850	1850	1850	192	100	725	
4015.SDTS070.1900	1900	1900	170	100	750	
4015.SDTS070.1950	1950	1950	160	100	875	
4015.SDTS070.2000	2000	2000	150	100	800	

Options: Various dimensions of the main profile, slide lengths, extensions, drillings and hole centres to customer requirements



We recommend use the major axis, do not dismantle the slide! The maximum safe load is given for a fully extended pair of slides, mounted on the major axis, with a load spread uniformly along the inner beam.

Material: All austenitic stainless steel parts
Beams: Stainless 316L (1.4404) cold drawn & precision milled
Ball bearings: Stainless 316L (1.4404 inox)
Ball cages & end bolts: Stainless 316 (1.4401 inox).
Surface treatment: Polished bright
Temperature range: Cryogenic to ≈800° C with suitable lubrication & material yield strength reduction