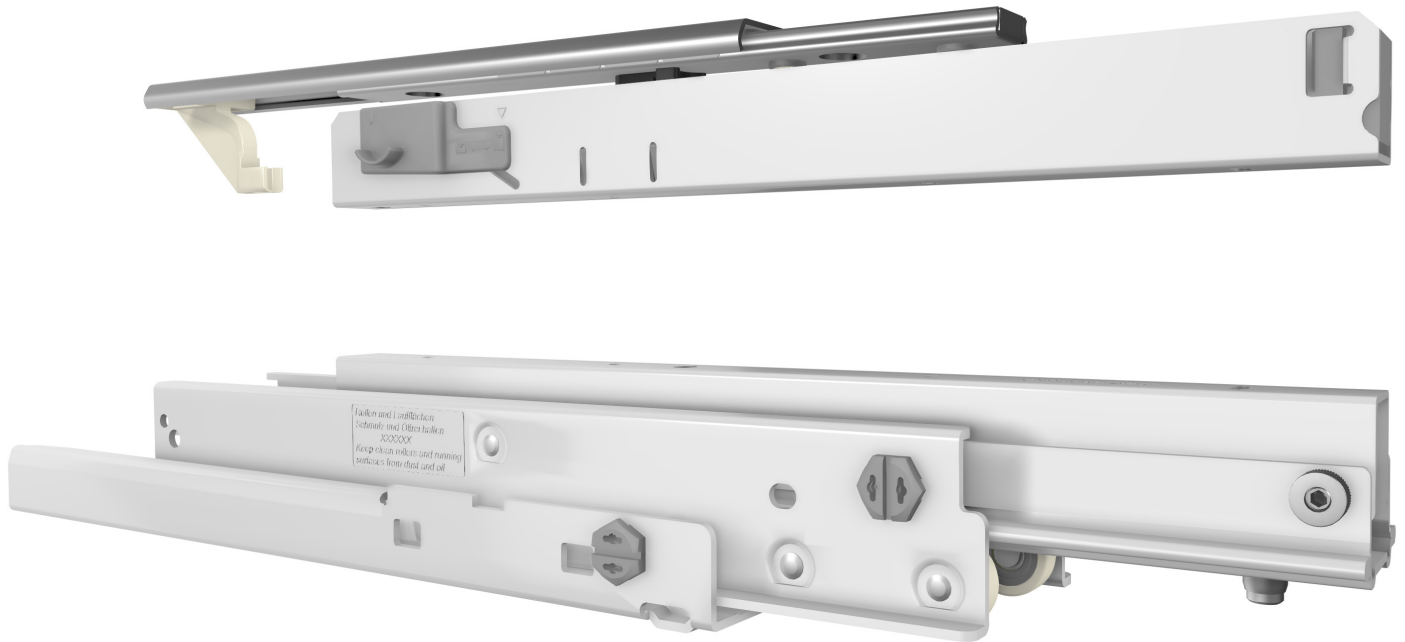


FR 771

TYPE:	Progressive action full-extension pantry pull out slide with top slide
MOUNTING:	Bottom Mount

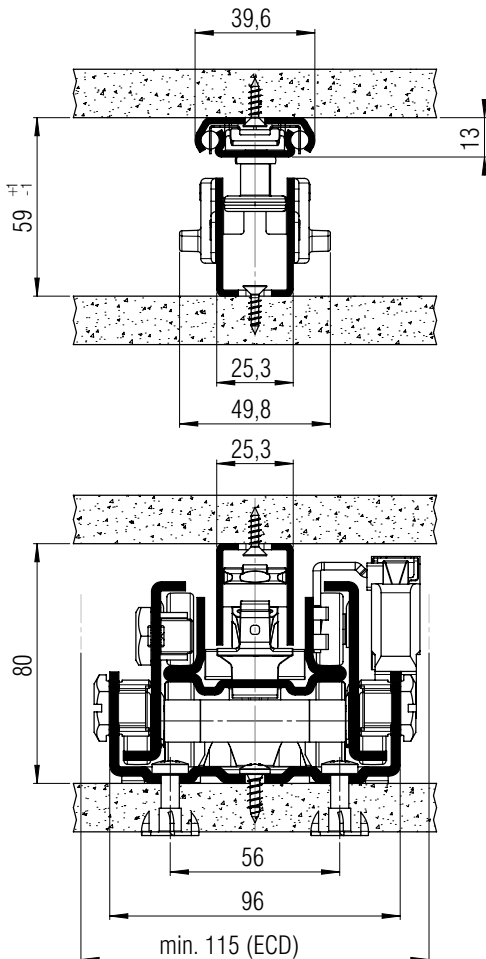
WIDTH:	min. 108 mm min. 115 mm (ECD)
LOAD:	dynamic up to 120 kg



MATERIAL:	steel, white powder coated
------------------	----------------------------

FEATURES:	solid delrin* rollers, delrin*-encased steel ball bearings
------------------	--

SPECIFICATIONS:
<ul style="list-style-type: none"> ▶ deflection in extended and loaded position maximum 5mm ▶ quick and easy installation through unique system ▶ optimum and quiet movement, even under heaviest loads ▶ integrated lateral and height adjustment ▶ top slide for absolute lateral stability ▶ simple assembly of the pullout unit via countersunk fixing holes for M6 countersunk screws
<p>ⓘ Do not lubricate the slide anywhere!</p> <p>Ⓜ NEW - Easy Close System FR 771 ECD option</p>



L mm	Weight per set (kg)	Order No.
400	5,9	▶ 7751
430	*	*
450	6,5	▶ 7752
480	*	*
500	7,4	▶ 7753
550	8,1	▶ 7754
600	8,7	▶ 7755
650	9,3	▶ 7756
700	10,0	▶ 7757
750	10,7	▶ 7758

Packing Unit:	1 set per box	▶ prompt delivery * on request
---------------	---------------	--------------------------------

