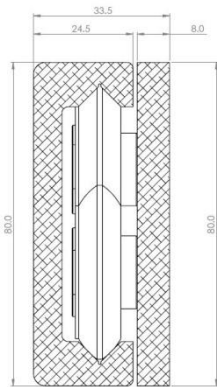
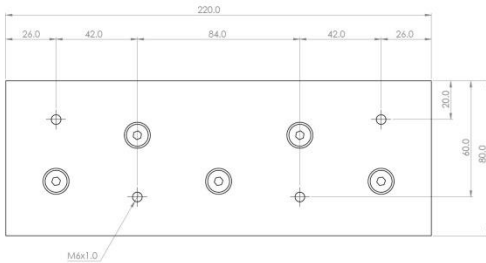
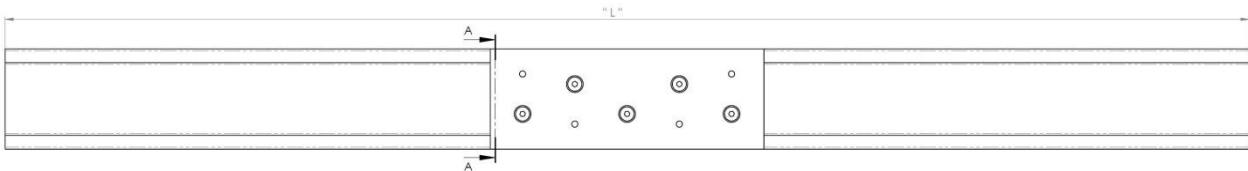


R80



Mounting details
Refer to drill table hole pitches

Configuration Table			
Part Number	Installation Length "L"	Extension Length	Load (kg)
4013.R80.CAR5S	220	0	70
4013.R80.0500	500	0	0
4013.R80.1000	1000	0	0
4013.R80.1500	1500	0	0
4013.R80.2000	2000	0	0
4013.R80.2500	2500	0	0
4013.R80.3000	3000	0	0
4013.R80.3500	3500	0	0
4013.R80.4000	4000	0	0
4013.R80.4500	4500	0	0
4013.R80.5000	5000	0	0

Options: Various dimensions of the main profile, slide lengths, drillings and hole centres to customer requirements

Sliders are supplied fitted with slight pre-load
Rails are supplied undrilled as standard
Load ratings are per carrier and can be increased accordingly



We recommend use the major axis, do not dismantle the slide! The maximum safe load is given for a fully extended pair of slides, mounted on the major axis, with a load spread uniformly along the inner beam.

Material: Anodized aluminium section standard (alloy 6005a)
Bearings are either Steel or Nylon

'UK Company, Global Reach'