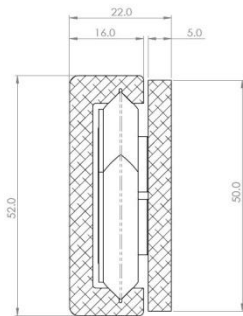
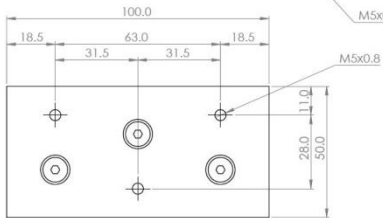
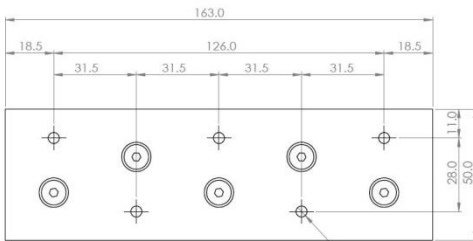
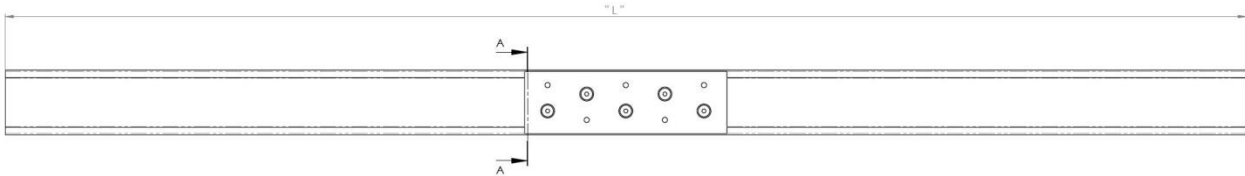


R52



SECTION A-A
SCALE 2:1

Mounting details
Refer to drill table hole pitches



We recommend use the major axis, do not dismantle the slide! The maximum safe load is given for a fully extended pair of slides, mounted on the major axis, with a load spread uniformly along the inner beam.

Configuration Table			
Part Number	Installation Length "L"	Extension Length	Load (kg)
4013.R52.CAR3D	100	0	28
4013.R52.CAR3S	100	0	28
4013.R52.CAR5D	163	0	40
4013.R52.CAR5S	163	0	40
4013.R52.0500	500	0	0
4013.R52.1000	1000	0	0
4013.R52.1500	1500	0	0
4013.R52.2000	2000	0	0
4013.R52.2500	2500	0	0
4013.R52.3000	3000	0	0
4013.R52.3500	3500	0	0
4013.R52.4000	4000	0	0
4013.R52.4500	4500	0	0
4013.R52.5000	5000	0	0

Options: Various dimensions of the main profile, slide lengths, drillings and hole centres to customer requirements

Sliders are supplied fitted with slight pre-load

Rails are supplied undrilled as standard

Load ratings are per carrier and can be increased accordingly

Material: Anodized aluminium section standard (alloy 6005a)

Bearings are either Steel or Nylon

'UK Company, Global Reach'