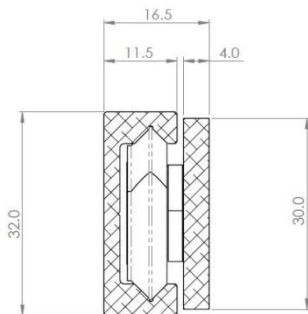
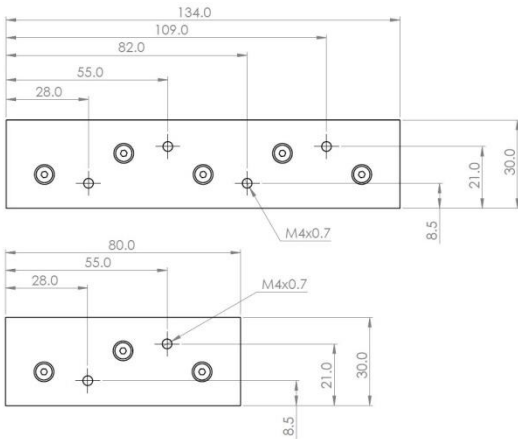
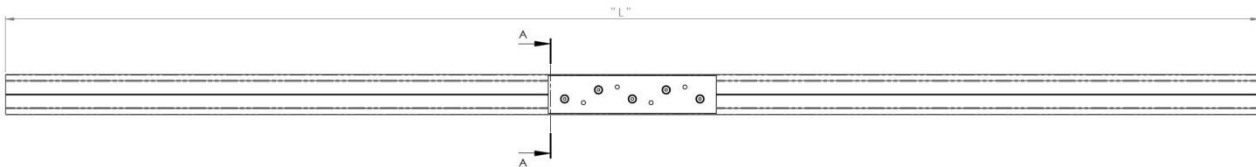


R32



Mounting details
Refer to drill table hole pitches



We recommend use the major axis, do not dismantle the slide! The maximum safe load is given for a fully extended pair of slides, mounted on the major axis, with a load spread uniformly along the inner beam.

Configuration Table			
Part Number	Installation Length "L"	Extension Length	Load (kg)
4013.R32.CAR3D	80	0	9
4013.R32.CAR3S	80	0	9
4013.R32.CAR5D	134	0	14
4013.R32.CAR5S	134	0	14
4013.R32.0500	500	0	0
4013.R32.1000	1000	0	0
4013.R32.1500	1500	0	0
4013.R32.2000	2000	0	0
4013.R32.2500	2500	0	0
4013.R32.3000	3000	0	0
4013.R32.3500	3500	0	0
4013.R32.4000	4000	0	0
4013.R32.4500	4500	0	0
4013.R32.5000	5000	0	0

Options: Various dimensions of the main profile, slide lengths, drillings and hole centres to customer requirements

Sliders are supplied fitted with slight pre-load

Rails are supplied undrilled as standard

Load ratings are per carrier and can be increased accordingly

Material: Anodized aluminium section standard (alloy 6005a)
Bearings are either Steel or Nylon

'UK Company, Global Reach'