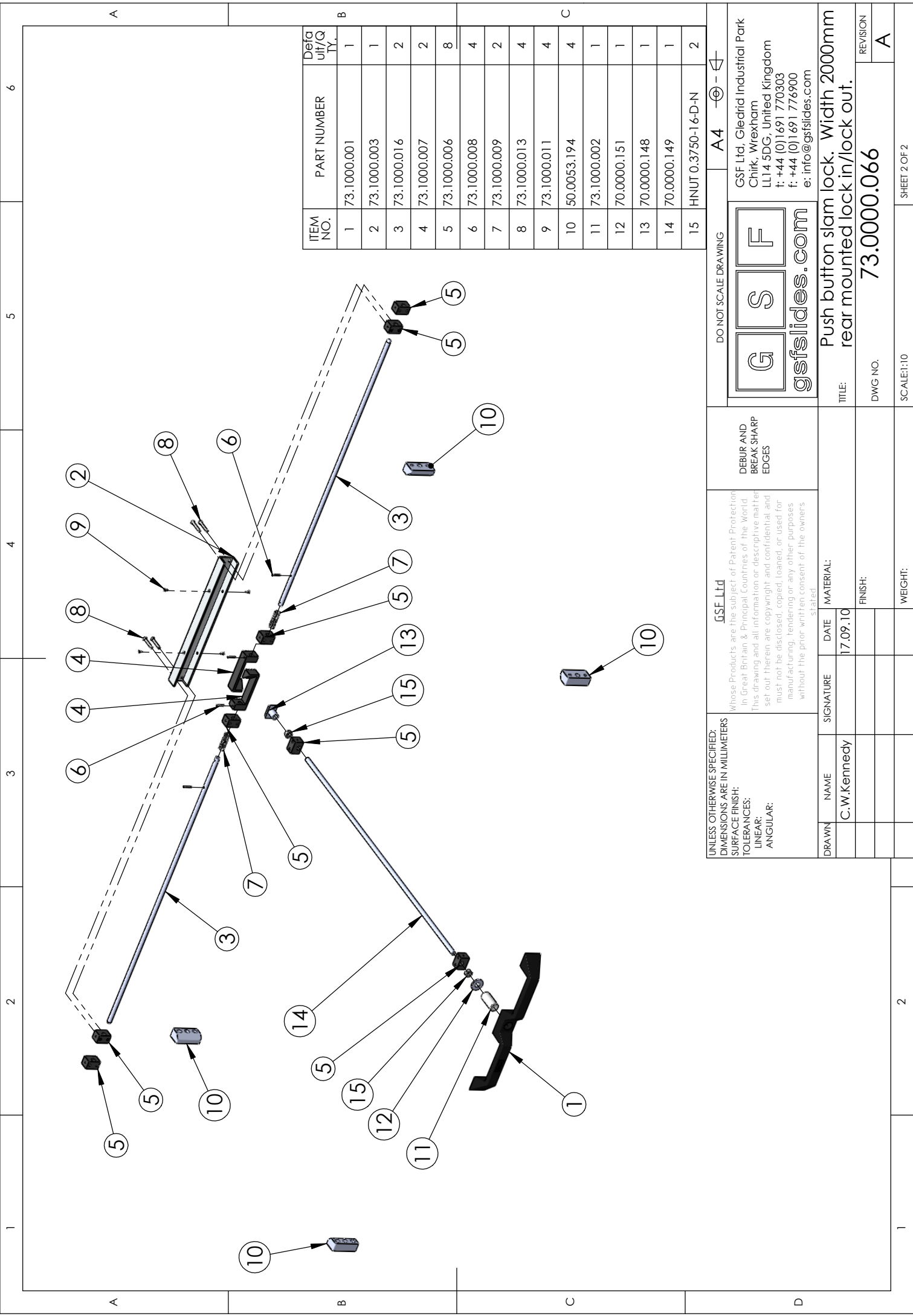


SEE SHEET 2 FOR EXPLODED VIEW AND KEY

UNLESS OTHERWISE SPECIFIED: DIMENSIONS ARE IN MILLIMETERS SURFACE FINISH: TOLERANCES: LINEAR: ANGULAR:		G S F Ltd Whose Products are the subject of Patent Protection in Great Britain & Principal Countries of the World This drawing and all information or descriptive matter set out herein are copyright and confidential and must not be disclosed, copied, loaned, or used for manufacturing, tendering or any other purposes without the prior written consent of the owners stated.		DEBUR AND BREAK SHARP EDGES		DO NOT SCALE DRAWING		A4	
G S F Ltd Chirk, Wrexham LL14 5DG, United Kingdom t: +44 (0)1691 770303 f: +44 (0)1691 776900 e: info@gfslides.com		G S F gfslides.com		G S F Ltd, Gledrid Industrial Park Chirk, Wrexham LL14 5DG, United Kingdom t: +44 (0)1691 770303 f: +44 (0)1691 776900 e: info@gfslides.com		G S F		G S F	
DRAWN	NAME	SIGNATURE	DATE	MATERIAL:	Push button slam lock. Width 2000mm rear mounted lock in/lock out.				
	C. W. Kennedy		17.09.10		TITLE:				
				FINISH:	DWG NO. 73.000.066				
				WEIGHT:	SCALE:1:10				
					SHEET 1 OF 2				
DETAIL B SCALE 1 : 5				REVISION					
				A					



ITEM NO.	PART NUMBER	Detail/Qty.
1	73.1000.001	1
2	73.1000.003	1
3	73.1000.016	2
4	73.1000.007	2
5	73.1000.006	8
6	73.1000.008	4
7	73.1000.009	2
8	73.1000.013	4
9	73.1000.011	4
10	50.0053.194	4
11	73.1000.002	1
12	70.0000.151	1
13	70.0000.148	1
14	70.0000.149	1
15	HNUT 0.3750-16-D-N	2

**DO NOT SCALE DRAWING**

	<b>gsfslides.com</b>
GSF Ltd, Gledrid Industrial Park Chirk, Wrexham LL14 5DG, United Kingdom t: +44 (0)1691 770303 f: +44 (0)1691 776900 e: info@gsfslides.com	

TITLE: Push button slam lock. Width 2000mm rear mounted lock in/lock out.	REVISION: A
DWG NO. 73.0000.066	SCALE: 1:10
SHEET 2 OF 2	WEIGHT:

**UNLESS OTHERWISE SPECIFIED: DIMENSIONS ARE IN MILLIMETERS**

**SURFACE FINISH:**

**TOLERANCES:**

LINEAR:

ANGULAR:

**GSF Ltd**

Whose Products are the subject of Patent Protection in Great Britain & Principal Countries of the World. This drawing and all information or descriptive matter set out herein are copyright and confidential and must not be disclosed, copied, loaned, or used for manufacturing, tendering or any other purposes without the prior written consent of the owners stated.

NAME	SIGNATURE	DATE	MATERIAL:
C. W. Kennedy		17.09.10	

**DEBUR AND BREAK SHARP EDGES**