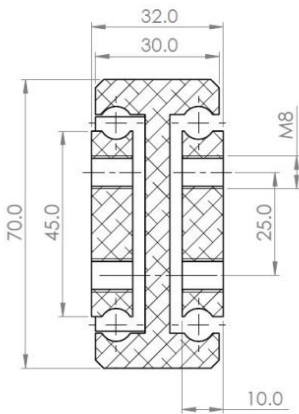
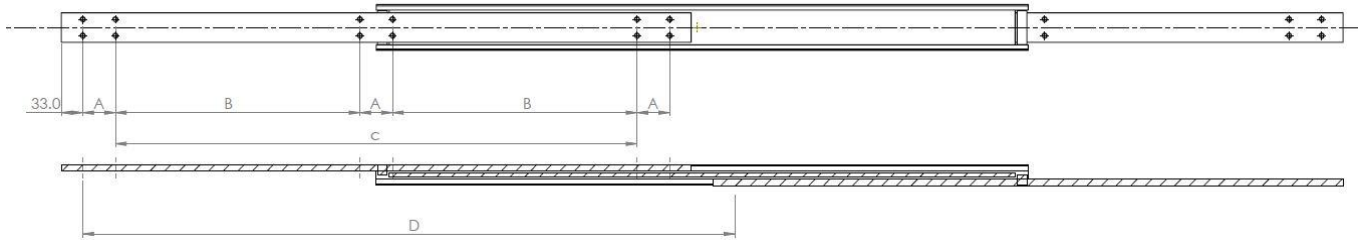


**ADTSB070**



**Mounting details**  
Refer to drill table hole pitches



We recommend use the major axis, do not dismantle the slide! The maximum safe load is given for a fully extended pair of slides, mounted on the major axis, with a load spread uniformly along the inner beam.

Configuration Table						
Part Number	Installation Length "L"	Extension Length "D"	Load Per Pair (kg)	Drill Table		
				"A"	"B"	"C"
4015.ADTSB070.0200	200	200	228	50		
4015.ADTSB070.0250	250	250	240	50		50
4015.ADTSB070.0300	300	300	252	50		100
4015.ADTSB070.0350	350	350	264	50		150
4015.ADTSB070.0400	400	400	276	50		200
4015.ADTSB070.0450	450	450	288	50		250
4015.ADTSB070.0500	500	500	300	50		300
4015.ADTSB070.0550	550	550	312	50		350
4015.ADTSB070.0600	600	600	324	50		400
4015.ADTSB070.0650	650	650	312	50	200	
4015.ADTSB070.0700	700	700	300	50	225	
4015.ADTSB070.0750	750	750	288	50	250	
4015.ADTSB070.0800	800	800	276	50	275	
4015.ADTSB070.0850	850	850	264	50	300	
4015.ADTSB070.0900	900	900	252	50	325	
4015.ADTSB070.0950	950	950	246	50	350	
4015.ADTSB070.1000	1000	1000	240	50	375	
4015.ADTSB070.1050	1050	1050	228	50	400	
4015.ADTSB070.1100	1100	1100	222	50	425	
4015.ADTSB070.1150	1150	1150	216	50	450	
4015.ADTSB070.1200	1200	1200	210	50	475	

Options: Various dimensions of the main profile, slide lengths, extensions, drillings and hole centres to customer requirements

**Material:**

- Beams:** Extruded & milled aluminium EN-AW 6082 T6
- Ball bearings:** Stainless steel AISI-316L (1.4404)
- Ball cages:** Stainless steel 430 Ferritic (1.4016)
- End bolts:** Stainless steel A2 304 (1.4301)
- Surface treatment:** Anodized to BS 1615 AA10 (max length 1100mm). 1150mm+ supplied raw, un-anodized.