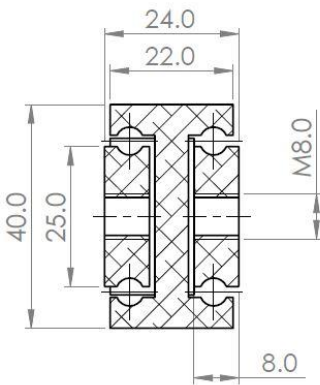
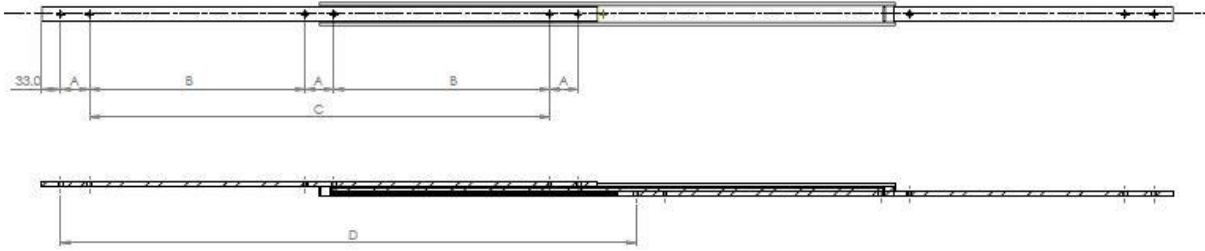


**ADTSB040**



**Mounting details**  
Refer to drill table hole pitches

Part Number	Installation Length "L"	Extension Length "D"	Load Per Pair (kg)	Drill Table		
				"A"	"B"	"C"
4015.ADTS040.0200	200	200	70	50		
4015.ADTS040.0250	250	250	75	50		50
4015.ADTS040.0300	300	300	80	50		100
4015.ADTS040.0350	350	350	85	50		150
4015.ADTS040.0400	400	400	90	50		200
4015.ADTS040.0450	450	450	95	50		250
4015.ADTS040.0500	500	500	100	50		300
4015.ADTS040.0550	550	550	105	50	150	
4015.ADTS040.0600	600	600	110	50	175	
4015.ADTS040.0650	650	650	105	50	200	
4015.ADTS040.0700	700	700	100	50	225	
4015.ADTS040.0750	750	750	95	50	250	
4015.ADTS040.0800	800	800	90	50	275	
4015.ADTS040.0850	850	850	85	50	300	
4015.ADTS040.0900	900	900	80	50	325	
4015.ADTS040.0950	950	950	75	50	350	
4015.ADTS040.1000	1000	1000	70	50	375	
4015.ADTS040.1050	1050	1050	65	50	400	
4015.ADTS040.1100	1100	1100	60	50	425	
4015.ADTS040.1150	1150	1150	55	50	450	
4015.ADTS040.1200	1200	1200	50	50	475	

Options: Various dimensions of the main profile, slide lengths, extensions, drillings and hole centres to customer requirements

**Material:**

- Beams:** Extruded & milled aluminium EN-AW 6082 T6
- Ball bearings:** Stainless steel AISI-316L (1.4404)
- Ball cages:** Stainless steel 430 Ferritic (1.4016)
- End bolts:** Stainless steel A2 304 (1.4301)
- Surface treatment:** Anodized to BS 1615 AA10 (max length 1100mm). 1150mm+ supplied raw, un-anodized.



We recommend use the major axis, do not dismantle the slide! The maximum safe load is given for a fully extended pair of slides, mounted on the major axis, with a load spread uniformly along the inner beam.