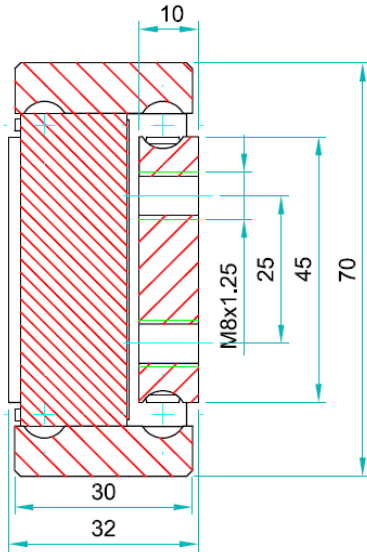


Full traversing is 2 x D when the slide is mounted in the open position



ADTSB-70 weighs 5.40kg/m sold as singles				Hole pattern		
Part Number	Installation Length: L	Extension Length: D	Load per pair: kg	"A"	"B"	"C"
ADTSB070.0200	200	200	240	50		
ADTSB070.0250	250	250	250	50		50
ADTSB070.0300	300	300	260	50		100
ADTSB070.0350	350	350	270	50		150
ADTSB070.0400	400	400	280	50		200
ADTSB070.0450	450	450	290	50		250
ADTSB070.0500	500	500	300	50		300
ADTSB070.0550	550	550	315	50		350
ADTSB070.0600	600	600	330	50		400
ADTSB070.0650	650	650	320	50	200	
ADTSB070.0700	700	700	310	50	225	
ADTSB070.0750	750	750	300	50	250	
ADTSB070.0800	800	800	290	50	275	
ADTSB070.0850	850	850	280	50	300	
ADTSB070.0900	900	900	270	50	325	
ADTSB070.0950	950	950	260	50	350	
ADTSB070.1000	1000	1000	250	50	375	
ADTSB070.1050	1050	1050	240	50	400	
ADTSB070.1100	1100	1100	230	50	425	
ADTSB070.1150	1150	1150	220	50	450	
ADTSB070.1200	1200	1200	210	50	475	
ADTSB070.1250	1250	1250	200	50	500	
ADTSB070.1300	1300	1300	190	50	525	
ADTSB070.1350	1350	1350	180	50	550	
ADTSB070.1400	1400	1400	170	50	575	
ADTSB070.1450	1450	1450	160	50	600	
ADTSB070.1500	1500	1500	155	50	625	



ADTSB070.1550	1550	1550	150	50	650	
ADTSB070.1600	1600	1600	145	50	675	
ADTSB070.1650	1650	1650	140	50	700	
ADTSB070.1700	1700	1700	135	100	650	
ADTSB070.1750	1750	1750	130	100	675	
ADTSB070.1800	1800	1800	125	100	700	
ADTSB070.1850	1850	1850	120	100	725	
ADTSB070.1900	1900	1900	115	100	750	
ADTSB070.1950	1950	1950	110	100	775	
ADTSB070.2000	2000	2000	105	100	800	

**Options:**

- 'F' - One mounting beam countersunk
- 'FF' - Both beams countersunk
- 'SC' - Stainless steel 316L ball cages
- 'SA' - Stainless 316L end bolts & retaining pins

**Bespoke length, drilling pattern & extension on request**



If mounting on the indirect axis, flat, as in the image above, reduce the load capacity by 60-80% and allow for increased deflection, or contact our engineers to request accurate FEA load analysis for OEM projects. We load rate per fully extended pair of slides on the direct axis, upright, with uniform loading across the beams. If load capacities need to be increased, please contact us for technical advice.

**Material:**

**Beams:** EN-AW 6082 T6, anodized acc. 8S1615 M10

**Ball bearings:** Stainless steel AISI-316L (1.4404)

**Ball cages:** Stainless steel. sheet 304 (1.4301). Laser cut

**End bolts:** Stainless steel A2 304 (1.4301)

**Surface Protection:** Anodized to BS 1615 AA10 (max length 1100mm). Lengths 1150mm+ supplied raw, un-anodised.

**Temperature range:** We recommend -40 to +200° C with low/high-temp lubrication and free movement to allow for expansion.

**Lubrication:** We apply and recommend lithium based EP3 grease for general applications. High & low temp grease upon request

**Thread pitches:** As per end profile image - coarse

**Do not dismantle the slide!**

The maximum safe working load is stated for a fully extended pair of slides, mounted upright.

Use all fixing holes and spread the load evenly across the inner beam.

Flat mounting: Reduce the load by 60-80%.

We recommend the use of strong L brackets for under or floor mount.

Deflection is calculated at approx 1% of the closed length, at or near full load capacity.

We do not recommend standard DTSB slides on automated/variable robotic pick & place or high speed shuttles. Factory adaptation and customer in situ testing is necessary. Operating speeds <0.3m/s.

Consult our engineers



**'Global Company, Global Reach'**