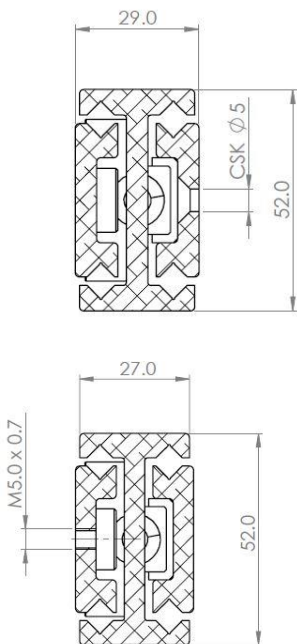
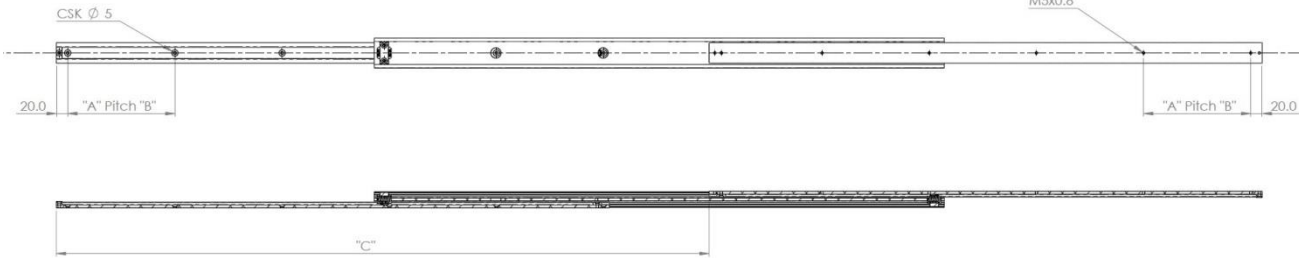
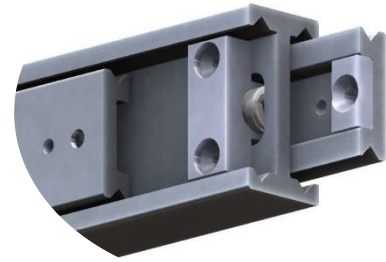


**5229**



Configuration Table					
Part Number	Installation Length "L"	Extension Length "C"	Load Per Pair (kg)	Drill Table	
				"A"	"B"
4013.5229.0300	300	305	175	120	3
4013.5229.0350	350	405	177	145	3
4013.5229.0400	400	435	180	113	4
4013.5229.0450	450	465	185	130	4
4013.5229.0500	500	565	190	110	5
4013.5229.0550	550	525	195	122.5	5
4013.5229.0600	600	625	200	135	5
4013.5229.0650	650	585	220	118	6
4013.5229.0700	700	685	200	128	6
4013.5229.0750	750	785	185	138	6
4013.5229.0800	800	885	175	148	6
4013.5229.0850	850	845	165	158	6
4013.5229.0900	900	945	155	168	6
4013.5229.0950	950	1045	145	178	6
4013.5229.1000	1000	1145	135	188	6

**Mounting details**  
Refer to drill table hole pitches



We recommend use the major axis, do not dismantle the slide! The maximum safe load is given for a fully extended pair of slides, mounted on the major axis, with a load spread uniformly along the inner beam.

- Anodised aluminium 6005A milled ball race for accuracy
- Caged cross roller bearings for smooth, deflection free extension
- Unique design eliminates brinelling/bearing indentation on the raceways
- Standard lengths and extensions 300-1000mm
- Special lengths, drillings and surface finish upon request
- Silent, lightweight and corrosion resistant

*'UK Company, Global Reach'*