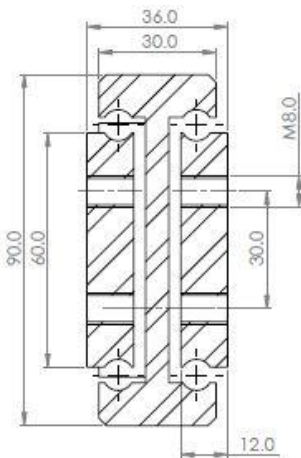
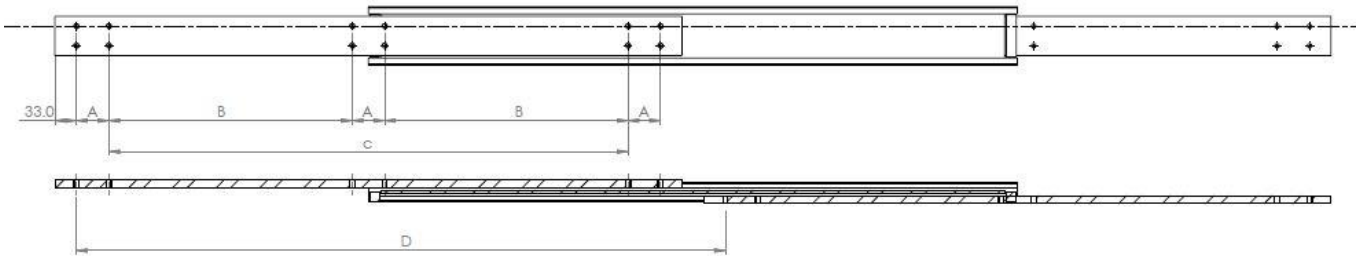


DTSB090



Mounting details
Refer to drill table hole pitches

Part Number	Configuration Table					
	Installation Length "L"	Extension Length "D"	Load Per Pair (kg)	Drill Table		
				"A"	"B"	"C"
4015.DTSB090.0300	300	300	1100	50		100
4015.DTSB090.0350	350	350	1080	50		150
4015.DTSB090.0400	400	400	1125	50		200
4015.DTSB090.0450	450	450	1100	50		250
4015.DTSB090.0500	500	500	1080	50		300
4015.DTSB090.0550	550	550	1060	50		350
4015.DTSB090.0600	600	600	1050	50		400
4015.DTSB090.0650	650	650	1040	50	200	
4015.DTSB090.0700	700	700	1025	50	225	
4015.DTSB090.0750	750	750	1000	50	250	
4015.DTSB090.0800	800	800	975	50	275	
4015.DTSB090.0850	850	850	950	50	300	
4015.DTSB090.0900	900	900	920	50	325	
4015.DTSB090.0950	950	950	890	50	350	
4015.DTSB090.1000	1000	1000	860	50	375	
4015.DTSB090.1050	1050	1050	830	50	400	
4015.DTSB090.1100	1100	1100	805	50	425	

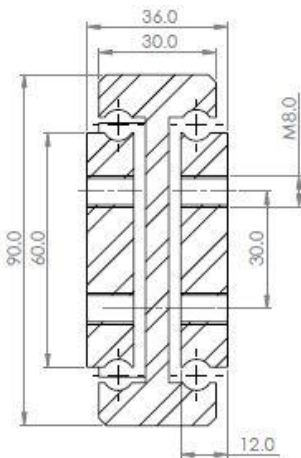
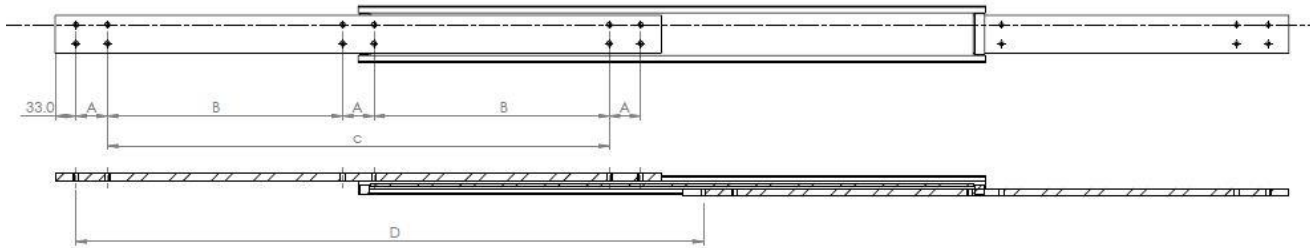
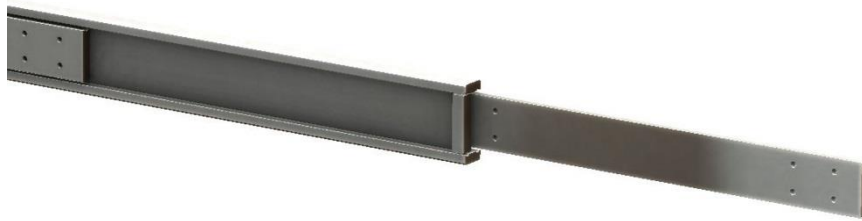
Options: Various dimensions of the main profile, slide lengths, extensions, drillings and hole centres to customer requirements



We recommend use the major axis, do not dismantle the slide! The maximum safe load is given for a fully extended pair of slides, mounted on the major axis, with a load spread uniformly along the inner beam.

- Material:** All steel parts
- Beams:** C45 E+C carbon steel. Cold drawn with milled raceways.
- Ball cages:** Sheet steel End Bolts: ASTM A307
- Steel surface protection:** Zinc & passivated - 10-12 micron μ
- Ball bearings:** Chromed C85, G100: DIN 5401 (Option SS 316L)
- Maximum temperature:** We recommend is 250°C with high-temp lubrication and free movement to allow for steel expansion.

DTSB090



Mounting details
Refer to drill table hole pitches

Part Number	Configuration Table		Load Per Pair (kg)	Drill Table		
	Installation Length "L"	Extension Length "D"		"A"	"B"	"C"
4015.DTSB090.1100	1100	1100	805	50	425	
4015.DTSB090.1150	1150	1150	775	50	450	
4015.DTSB090.1200	1200	1200	750	50	475	
4015.DTSB090.1250	1250	1250	720	50	500	
4015.DTSB090.1300	1300	1300	690	50	525	
4015.DTSB090.1350	1350	1350	660	50	550	
4015.DTSB090.1400	1400	1400	630	50	575	
4015.DTSB090.1450	1450	1450	600	50	600	
4015.DTSB090.1500	1500	1500	575	50	625	
4015.DTSB090.1550	1550	1550	545	50	650	
4015.DTSB090.1600	1600	1600	520	50	675	
4015.DTSB090.1650	1650	1650	490	50	700	
4015.DTSB090.1700	1700	1700	460	100	650	
4015.DTSB090.1750	1750	1750	430	100	675	
4015.DTSB090.1800	1800	1800	400	100	700	

Options: Various dimensions of the main profile, slide lengths, extensions, drillings and hole centres to customer requirements



We recommend use the major axis, do not dismantle the slide! The maximum safe load is given for a fully extended pair of slides, mounted on the major axis, with a load spread uniformly along the inner beam.

- Material:** All steel parts
- Beams:** C45 E+C carbon steel. Cold drawn with milled raceways.
- Ball cages:** Sheet steel End Bolts: ASTM A307
- Steel surface protection:** Zinc & passivated - 10-12 micron μ
- Ball bearings:** Chromed C85, G100: DIN 5401 (Option SS 316L)
- Maximum temperature:** We recommend is 250°C with high-temp lubrication and free movement to allow for steel expansion.