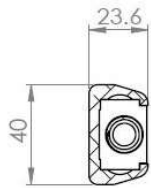
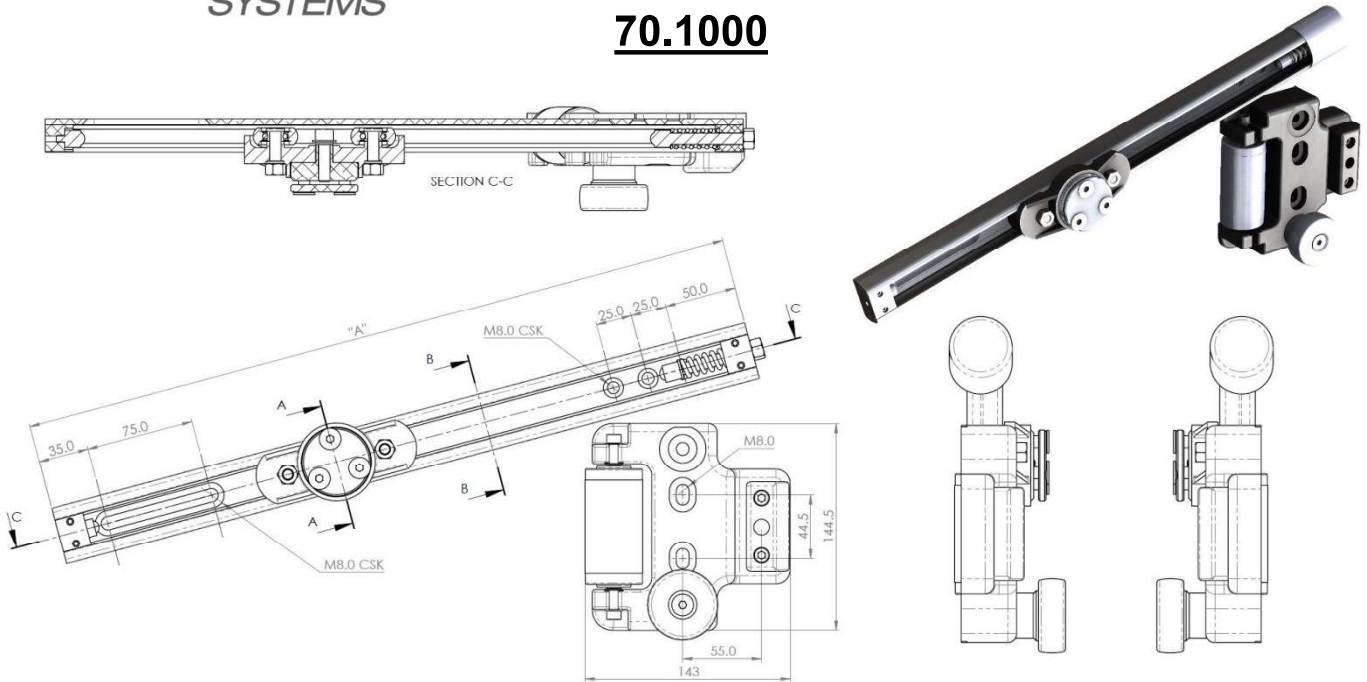
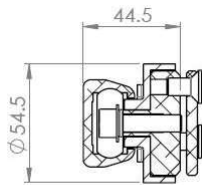


### 70.1000



SECTION B-B



SECTION A-A

Configuration Table			
Part Number	Closed Length "A"	Extension Length	Load Per Pair (kg)
70.1000.0450	450	240	90
70.1000.0500	500	290	90
70.1000.0550	550	340	90
70.1000.0600	600	390	90
70.1000.0650	650	440	90
70.1000.0700	700	490	75
70.1000.0750	750	540	75
70.1000.0800	800	590	75
70.1000.0850	850	640	75
70.1000.0900	900	690	75
70.1000.0950	950	740	75
70.1000.1000	1000	790	60
70.1000.1050	1050	840	60
70.1000.1100	1100	890	60
70.1000.1200	1200	990	60
70.1000.1300	1300	1090	60
70.1000.1400	1400	1190	60
70.1000.1500	1500	1290	35
70.1000.1600	1600	1390	35
70.1000.1700	1700	1490	35
70.1000.1800	1800	1590	20
70.1000.1900	1900	1690	20
70.1000.2000	2000	1790	20

Options: Various dimensions slide lengths, extensions, drillings and hole centres to customer requirements



We recommend use the major axis, do not dismantle the slide! The maximum safe load is given for a fully extended pair of slides, mounted on the major axis, with a load spread uniformly along the inner beam.

**Material:**

- Rail and components – Aluminium 6060 T6
- Plastic parts – Polyamide, 30% glass reinforced
- Wheels & Bearing casings – "Supertough" PA66, 33% glass reinforced
- Bearings – Stainless steel grade 304

*'UK Company, Global Reach'*