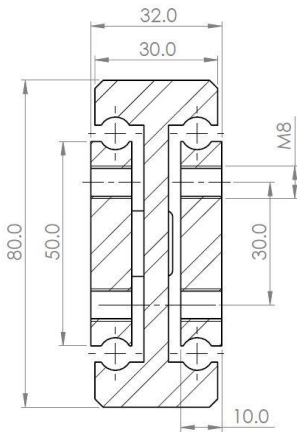
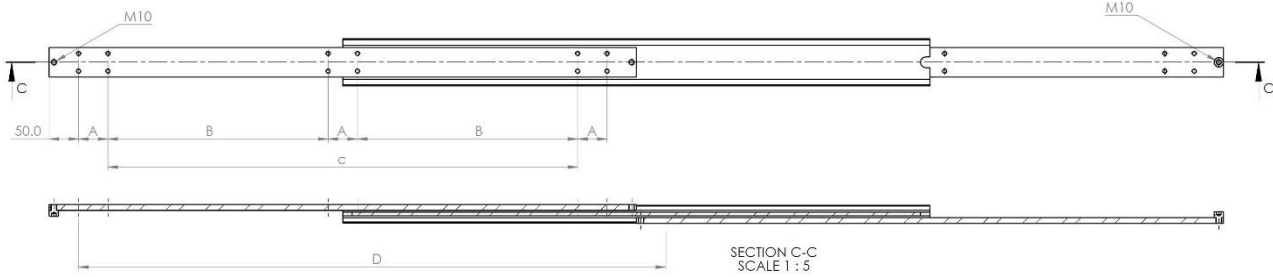
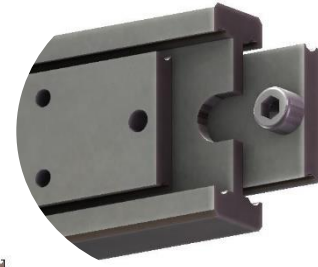
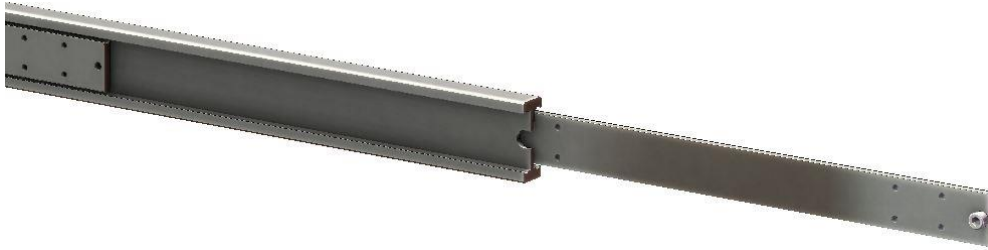


DTS080



Mounting details
Refer to drill table hole pitches

Configuration Table						
Part Number	Installation Length "L"	Extension Length "D"	Load Per Pair (kg)	Drill Table		
				"A"	"B"	"C"
4015.DTS080.0200	200	200	570	50		
4015.DTS080.0250	250	250	600	50		50
4015.DTS080.0300	300	300	630	50		100
4015.DTS080.0350	350	350	660	50		150
4015.DTS080.0400	400	400	690	50		200
4015.DTS080.0450	450	450	720	50		250
4015.DTS080.0500	500	500	736	50		300
4015.DTS080.0550	550	550	744	50		350
4015.DTS080.0600	600	600	758	50		400
4015.DTS080.0650	650	650	756	50	200	
4015.DTS080.0700	700	700	754	50	225	
4015.DTS080.0750	750	750	740	50	250	
4015.DTS080.0800	800	800	730	50	275	
4015.DTS080.0850	850	850	720	50	300	
4015.DTS080.0900	900	900	710	50	325	
4015.DTS080.0950	950	950	700	50	350	
4015.DTS080.1000	1000	1000	690	50	375	
4015.DTS080.1050	1050	1050	680	50	400	
4015.DTS080.1100	1100	1100	670	50	425	
4015.DTS080.1150	1150	1150	660	50	450	
4015.DTS080.1200	1200	1200	650	50	475	
4015.DTS080.1250	1250	1250	640	50	500	
4015.DTS080.1300	1300	1300	630	50	525	
4015.DTS080.1350	1350	1350	620	50	550	
4015.DTS080.1400	1400	1400	600	50	575	

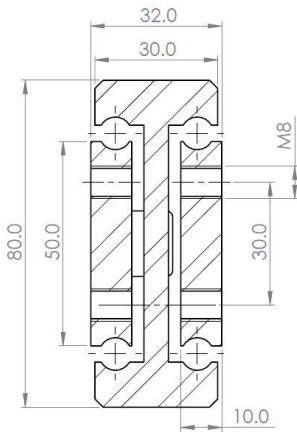
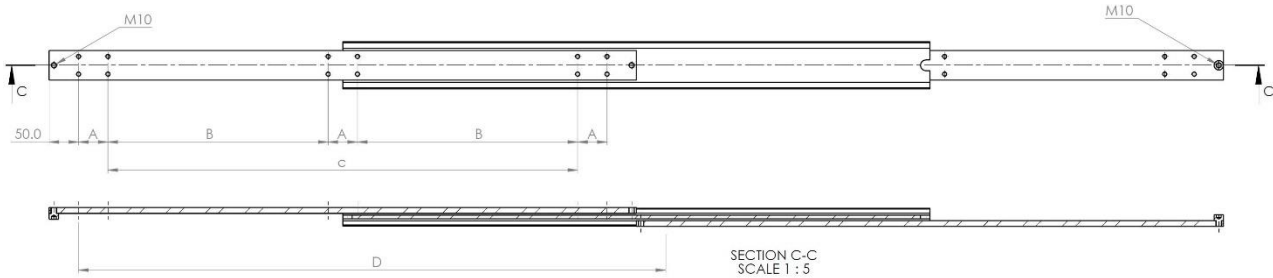
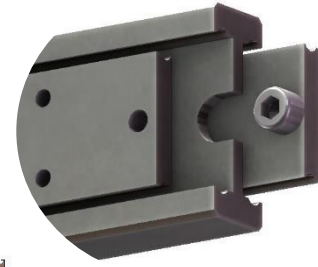
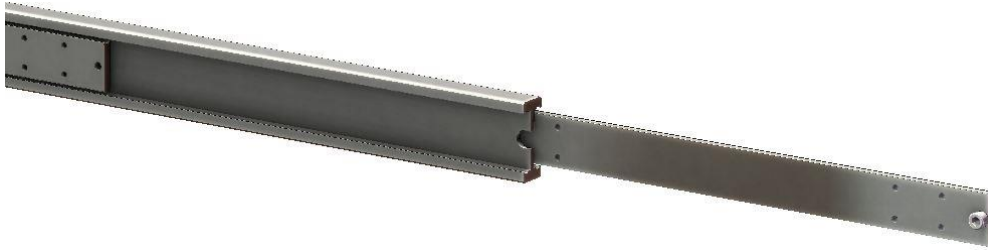


We recommend use the major axis, do not dismantle the slide! The maximum safe load is given for a fully extended pair of slides, mounted on the major axis, with a load spread uniformly along the inner beam.

Options: Various dimensions of the main profile, slide lengths, extensions, drillings and hole centres to customer requirements

- Material:** All steel parts
- Beams:** C45 E+C carbon steel. Cold drawn with milled raceways.
- Ball cages:** Sheet steel End Bolts: ASTM A307
- Steel surface protection:** Zinc & passivated - 10-12 micron μ
- Ball bearings:** Chromed C85, G100: DIN 5401 (Option SS 316L)
- Maximum temperature:** We recommend is 250°C with high-temp lubrication and free movement to allow for steel expansion.

DTS080



Mounting details
Refer to drill table hole pitches

Configuration Table				
Part Number	Installation	Extension	Load Per Pair	Drill Table
4015.DTS080.1450	1450	1450	590	50 600
4015.DTS080.1500	1500	1500	580	50 625
4015.DTS080.1550	1550	1550	555	50 650
4015.DTS080.1600	1600	1600	530	50 675
4015.DTS080.1650	1650	1650	500	50 700
4015.DTS080.1700	1700	1700	470	100 650
4015.DTS080.1750	1750	1750	430	100 675
4015.DTS080.1800	1800	1800	380	100 700
4015.DTS080.1850	1850	1850	340	100 725
4015.DTS080.1900	1900	1900	300	100 750
4015.DTS080.1950	1950	1950	275	100 875
4015.DTS080.2000	2000	2000	250	100 800

Options: Various dimensions of the main profile, slide lengths, extensions, drillings and hole centres to customer requirements



We recommend use the major axis, do not dismantle the slide! The maximum safe load is given for a fully extended pair of slides, mounted on the major axis, with a load spread uniformly along the inner beam.



Material: All steel parts

Beams: C45 E+C carbon steel. Cold drawn with milled raceways.

Ball cages: Sheet steel End Bolts: ASTM A307

Steel surface protection: Zinc & passivated - 10-12 micron μ

Ball bearings: Chromed C85, G100: DIN 5401 (Option SS 316L)

Maximum temperature: We recommend is 250°C with high-temp lubrication and free movement to allow for steel expansion.