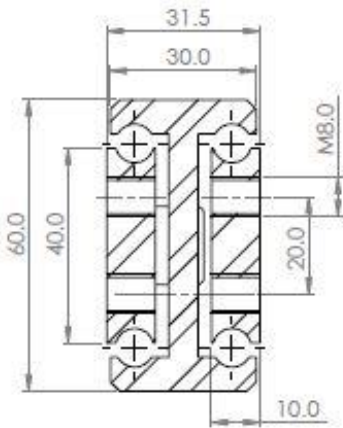
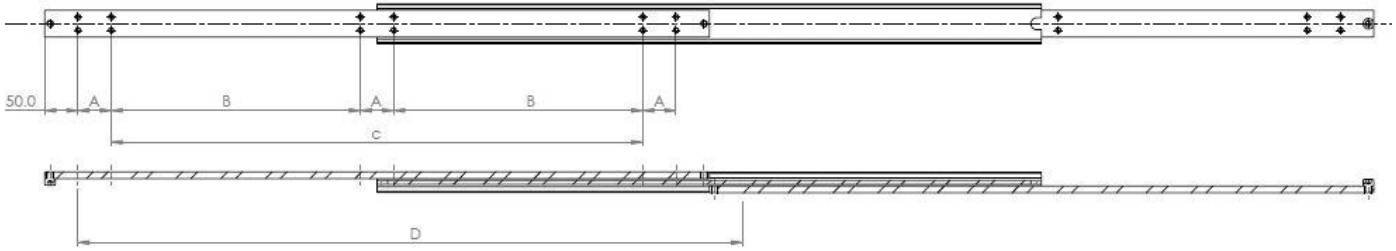
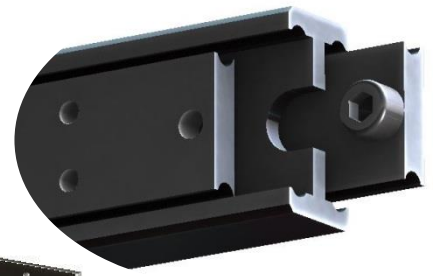


DTS060



Mounting details
Refer to drill table hole pitches

Configuration Table						
Part Number	Installation Length "L"	Extension Length "D"	Load Per Pair (kg)	Drill Table		
				"A"	"B"	"C"
4015.DTS060.0250	250	250	410	50		50
4015.DTS060.0300	300	300	420	50		100
4015.DTS060.0350	350	350	430	50		150
4015.DTS060.0400	400	400	435	50		200
4015.DTS060.0450	450	450	440	50		250
4015.DTS060.0500	500	500	446	50		300
4015.DTS060.0550	550	550	460	50	150	
4015.DTS060.0600	600	600	472	50	175	
4015.DTS060.0650	650	650	484	50	200	
4015.DTS060.0700	700	700	498	50	225	
4015.DTS060.0750	750	750	510	50	250	
4015.DTS060.0800	800	800	518	50	275	
4015.DTS060.0850	850	850	522	50	300	
4015.DTS060.0900	900	900	520	50	325	
4015.DTS060.0950	950	950	510	50	350	
4015.DTS060.1000	1000	1000	503	50	375	
4015.DTS060.1050	1050	1050	484	50	400	
4015.DTS060.1100	1100	1100	465	50	425	
4015.DTS060.1150	1150	1150	443	50	450	
4015.DTS060.1200	1200	1200	420	50	475	
4015.DTS060.1250	1250	1250	397	50	500	
4015.DTS060.1300	1300	1300	375	50	525	

Options: Various dimensions of the main profile, slide lengths, extensions, drillings and hole centres to customer requirements



We recommend use the major axis, do not dismantle the slide! The maximum safe load is given for a fully extended pair of slides, mounted on the major axis, with a load spread uniformly along the inner beam.

Material: All steel parts

Beams: C45 E+C carbon steel. Cold drawn with milled raceways.

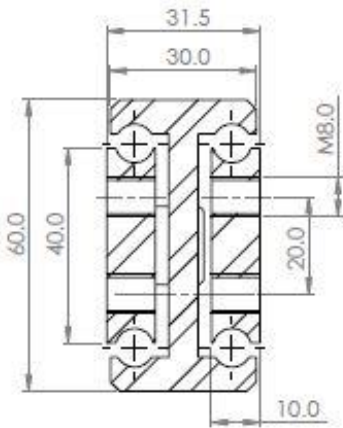
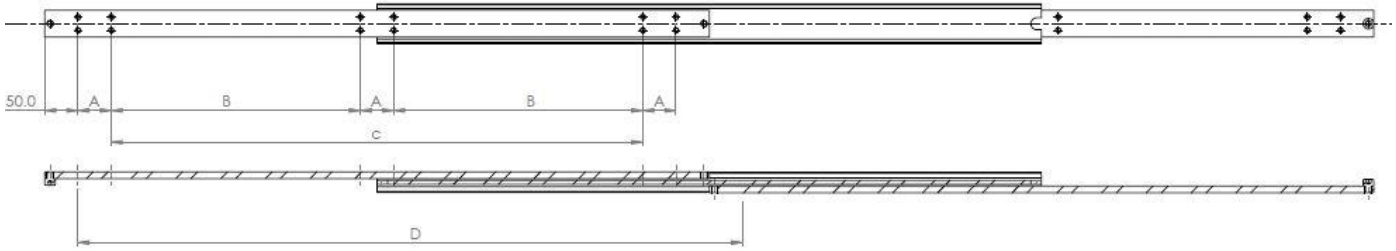
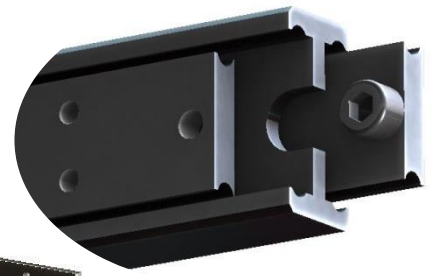
Ball cages: Sheet steel End Bolts: ASTM A307

Steel surface protection: Zinc & passivated - 10-12 micron μ

Ball bearings: Chromed C85, G100: DIN 5401 (Option SS 316L)

Maximum temperature: We recommend is 250°C with high-temp lubrication and free movement to allow for steel expansion.

DTS060



Mounting details
Refer to drill table hole pitches

Configuration Table						
Part Number	Installation Length "L"	Extension Length "D"	Load Per Pair (kg)	Drill Table		
				"A"	"B"	"C"
4015.DTS060.1350	1350	1350	353	50	550	
4015.DTS060.1400	1400	1400	332	50	575	
4015.DTS060.1450	1450	1450	309	50	600	
4015.DTS060.1500	1500	1500	292	50	625	
4015.DTS060.1550	1550	1550	271	50	650	
4015.DTS060.1600	1600	1600	251	50	675	
4015.DTS060.1650	1650	1650	232	50	700	
4015.DTS060.1700	1700	1700	213	50	725	
4015.DTS060.1750	1750	1750	194	50	750	
4015.DTS060.1800	1800	1800	175	50	775	
4015.DTS060.1850	1850	1850	158	50	800	
4015.DTS060.1900	1900	1900	140	50	825	
4015.DTS060.1950	1950	1950	122	50	850	
4015.DTS060.2000	2000	2000	104	50	875	

Options: Various dimensions of the main profile, slide lengths, extensions, drillings and hole centres to customer requirements



We recommend use the major axis, do not dismantle the slide! The maximum safe load is given for a fully extended pair of slides, mounted on the major axis, with a load spread uniformly along the inner beam.

Material: All steel parts
Beams: C45 E+C carbon steel. Cold drawn with milled raceways.
Ball cages: Sheet steel End Bolts: ASTM A307
Steel surface protection: Zinc & passivated - 10-12 micron μ
Ball bearings: Chromed C85, G100: DIN 5401 (Option SS 316L)
Maximum temperature: We recommend is 250°C with high-temp lubrication and free movement to allow for steel expansion.