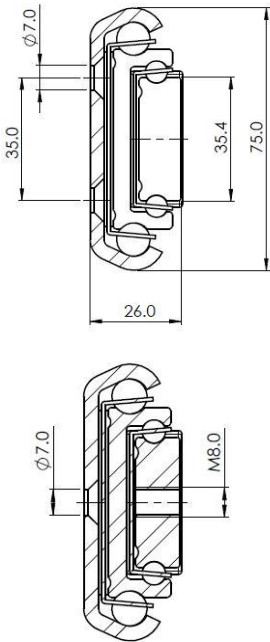
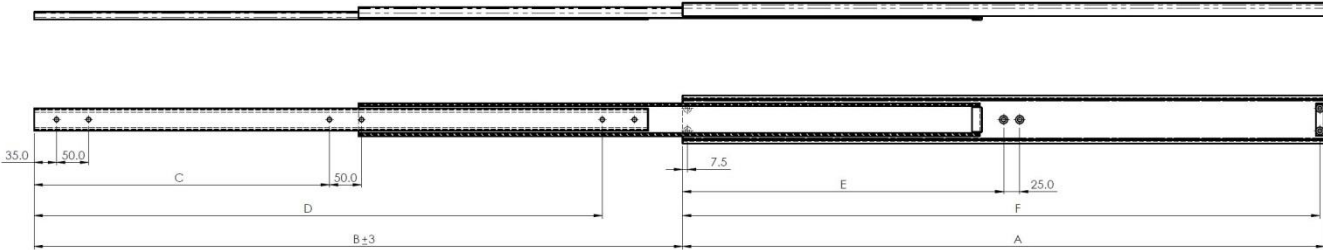
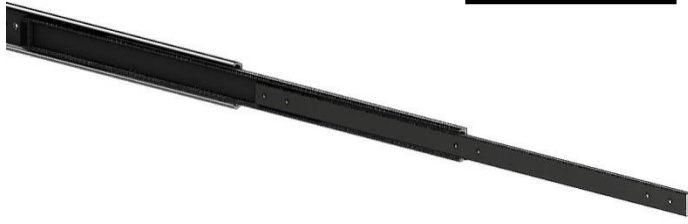


Ultio 7055



Part Number	Installation Length "A"	Extension Length "B"	Load Per Pair (kg)	Drill Table			
				"C"	"D"	"E"	"F"
				4005.7055.0300	300	360	324
4005.7055.0350	350	420	342		235		342.5
4005.7055.0400	400	480	351		285		392.5
4005.7055.0450	450	540	360		335		442.5
4005.7055.0500	500	600	369		385		492.5
4005.7055.0550	550	660	378	235	435	275	542.5
4005.7055.0600	600	720	387	260	485	300	592.5
4005.7055.0650	650	780	378	285	535	325	642.5
4005.7055.0700	700	840	369	310	585	350	692.5
4005.7055.0750	750	900	360	335	635	375	742.5
4005.7055.0800	800	960	351	360	685	400	792.5
4005.7055.0850	850	1020	342	385	735	425	842.5
4005.7055.0900	900	1080	333	410	785	450	892.5
4005.7055.0950	950	1140	324	435	835	475	942.5
4005.7055.1000	1000	1200	315	460	885	500	992.5
4005.7055.1100	1100	1320	288	510	985	550	1092.5
4005.7055.1200	1200	1440	270	560	1085	600	1192.5
4005.7055.1300	1300	1560	252	610	1185	650	1292.5
4005.7055.1400	1400	1680	234	660	1285	700	1392.5
4005.7055.1500	1500	1800	216	710	1385	750	1492.5

Mounting details
Refer to drill table hole pitches



We recommend use the major axis, do not dismantle the slide! The maximum safe load is given for a fully extended pair of slides, mounted on the major axis, with a load spread uniformly along the inner beam.

Options: Various dimensions of the main profile, slide lengths, extensions, drillings and hole centres to customer requirements

Material: Our slides are processed with milling, from cold drawn material in quality C45 in accordance with EN10277. Standard ball cages are manufactured from Stainless Steel. Standard balls used are Stainless Steel, all grade 304

'UK Company, Global Reach'