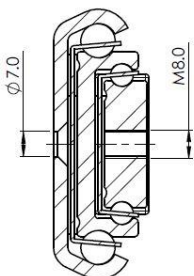
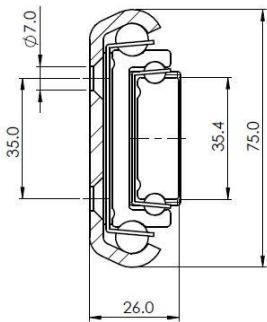
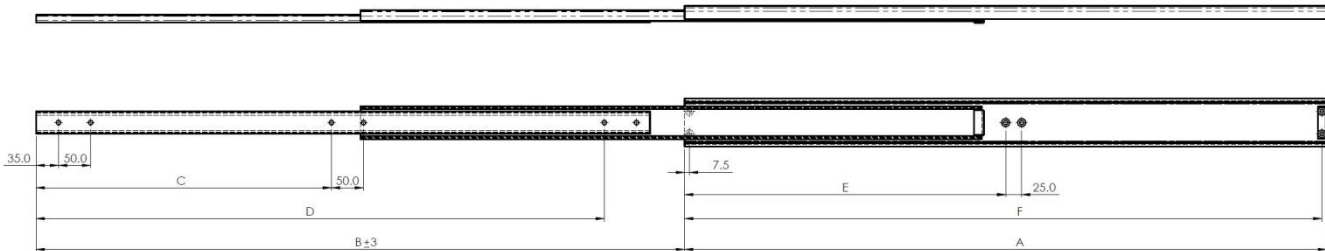
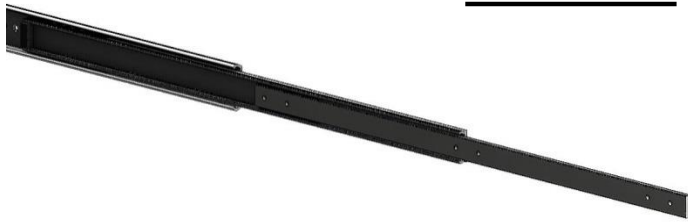


**Ultio 7050**



Part Number	Installation Length "A"	Extension Length "B"	Load Per Pair (kg)	Drill Table			
				"C"	"D"	"E"	"F"
				4005.7050.0300	300	310	360
4005.7050.0350	350	360	380		235		342.5
4005.7050.0400	400	410	390		285		392.5
4005.7050.0450	450	460	400		335		442.5
4005.7050.0500	500	510	410		385		492.5
4005.7050.0550	550	560	420	235	435	275	542.5
4005.7050.0600	600	610	430	260	485	300	592.5
4005.7050.0650	650	660	420	285	535	325	642.5
4005.7050.0700	700	710	410	310	585	350	692.5
4005.7050.0750	750	760	400	335	635	375	742.5
4005.7050.0800	800	810	390	360	685	400	792.5
4005.7050.0850	850	860	380	385	735	425	842.5
4005.7050.0900	900	910	370	410	785	450	892.5
4005.7050.0950	950	960	360	435	835	475	942.5
4005.7050.1000	1000	1010	350	460	885	500	992.5
4005.7050.1100	1100	1110	320	510	985	550	1092.5
4005.7050.1200	1200	1210	300	560	1085	600	1192.5
4005.7050.1300	1300	1310	280	610	1185	650	1292.5
4005.7050.1400	1400	1410	260	660	1285	700	1392.5
4005.7050.1500	1500	1510	240	710	1385	750	1492.5

**Mounting details**  
Refer to drill table hole pitches



We recommend use the major axis, do not dismantle the slide! The maximum safe load is given for a fully extended pair of slides, mounted on the major axis, with a load spread uniformly along the inner beam.

Options: Various dimensions of the main profile, slide lengths, extensions, drillings and hole centres to customer requirements

**Material:** Our slides are processed with milling, from cold drawn material in quality C45 in accordance with EN10277. Standard ball cages are manufactured from Stainless Steel. Standard balls used are Stainless Steel, all grade 304.

*'UK Company, Global Reach'*